



2023

# Game Recommendations Guide





Since 1992, PrimeTime Amusements has been serving the amusement industry, growing to become a top distributor, operator and rental source. We take pride in what we do, which is reflected not only by our superbly-detailed website and product videos, but also by our service.

We are also capable of shipping to just about any country on the planet, having shipped game equipment to over 40 countries by 2023. We also boast the most linguistically diverse sales team in the industry, with support in English, Spanish, Portuguese, and Dutch!

This guide features our current game recommendations. Click on any page itself to visit its respective product page. If you have any questions about a product herein, give us a call or send us an email and we'll be happy to help - 1.800.550.0090 or [sales@primetimeamusements.com](mailto:sales@primetimeamusements.com)

PrimeTime Amusements is also one of the largest game operators in Florida. We designed the arcades for Xtreme Action Park, Elev8 Fun (below) and more!



Visit the Elev8 Fun website:  
<https://elev8fun.com>



# TICKET REDEMPTION





**Made by:**

**Sega Amusements**

**Players Supported: 1**

**Features:**

Giant version of a  
popular toy

Unique controls

Mesmerizing LED lighting



You played it as a kid, now play it at the arcade and win tickets. Bop It! provides the same fun as the world famous toy but in a format players haven't seen before. High replay value!



### ***Single Cabinet Dimensions:***

H: 106" W: 47" D: 28" Weight: 368lbs.

Electrical: 110V @ 2.3A, 250W





# SpongeBob SquarePants Ticket Coaster

**Made by:**

Andamiro USA

**Players Supported:**

1-2

**Features:**

Real train setup

Skill-based play

Powerful license

2 player stations



Toy trains have a classic appeal to them and now here's a game tied up with a strong license that integrates a moving locomotive into the gameplay. Players must push the button to release the ball and get it to land into one of the valued train carts to win tickets. Easy to learn, difficult to master!



## ***Single Cabinet Dimensions:***

H:101" W:71" D:55" Weight: 952lbs.

Electrical: 110V @ 450W. 3A / 220V





# Rick & Morty: Blipz and Chitz

**Made by:**

LAI Games

**Players Supported:**

1-2

**Features:**

Licensed theme & art

Marble pusher base

2 player stations, 1 cab

Colorful disks for bonuses



Rick & Morty is one of the most popular adult cartoons in the world and now you can bring it to the arcade, combined with the earnings power of a pusher. Launch a marble on the left or the right using the button; Get disks onto the playfield to increase your bonuses and win tons of tickets!



***Single Cabinet Dimensions:***

H: 100" W: 62" D: 38.5"

Electrical: 110V / 220V



# Axe Master

**Made by:**

**BayTek Entertainment**

**Players Supported:**

**1-2**

**Features:**

"Real feel" rubber axes  
Automatic axe retrieval  
system

LCD screen for scoring



The axe throwing sensation now works for arcades thanks to this innovative piece by BayTek Entertainment. Instead of throwing real metal axes at a target, players throw rubberized ones. The game will automatically remove stuck axes and return them to players. If you want to make a statement in your game room, this is an easy way to do it!



## ***Single Cabinet Dimensions:***

H:135" W:82" D:188" Weight: 1829lbs

Electrical: 115V @ 5A





# Avengers: Infinity Stone Challenge

**Made by:**  
Andamiro USA  
**Players Supported:**  
1-2

**Features:**  
Skill-based play  
Powerful license  
2 player stations  
Super bonus wheel



The quest for the Infinity Stones comes to the arcade with this skill-based, ball drop redemption game. Time the release of your ball to land into the moving holes below.

Colored balls represent the stones; Once all stones have been lit on the Gauntlet, play the wheel for a chance at the super bonus of tickets!



## ***Single Cabinet Dimensions:***

H: 96" W: 69" D: 40" Weight: 930 lbs.

Electrical: 110V @ 3.5A, 400W

# Hungry Hungry Hippos

**Made by:**

Adrenaline Am.

**Players Supported:**

1-4

**Features:**

Giant hippo-shaped seats

Lever controls

Self-contained ball pit

2x sided LED score bar



The Hungry Hungry Hippos board game is now a GIANT arcade machine! Eat as many pellets as you can before the timer runs out, besting your rivals for the most tickets. Unique mechanical game that mimics the home game in a way that a console or phone could never do.

***Single Cabinet Dimensions:***

H: 108" W: 116" D: 116 Weight: 1000lbs.

Electrical: 120V @ 9A / 230V @ 4.5A





# Basketball Pro

**Made by:**

Andamiro USA

**Players Supported:**

1-2

**Features:**

Self-contained

Unique pump ball controls

2 player stations

Two models



Offer basketball fun at the arcade without the giant and expensive machines! This uses a pump-action controller, where players punch/hit the rubber ball to launch the smaller balls inside of the game. Get as many points as you can before the shot clock runs out! Available in a ticket redemption or non-ticket "fun" model.



## ***Single Cabinet Dimensions:***

H: 98" W: 32" D: 38" Weight: 480lbs.

Electrical: 120V @ 300W, 2.8A

# Angry Birds

**Made by:**

Adrenaline Am.

**Players Supported:**

1

**Features:**

Licensed theme & art

Timeless gameplay

Red numerical LED counters

3D molded Marquee



Take out your anger on the evil pigs in this classic hammer whacker game that sports the Angry Birds license. It plays like any other whacker but thanks to the popularity of the Angry Birds games, it's sure to get attention where a regular whacker game would not.



## ***Single Cabinet Dimensions:***

H: 87.5" W: 32.5" D: 44" Weight: 350lbs

Electrical: 110V @ 3A / 220V @ 1.5A





# Down The Clown

**Made by:**  
ICE

**Players Supported:**  
1 per unit

**Features:**

Attractively colored cabinet  
RGB LED lighting  
Clown motif  
Banking marquee available



Bring the fun of the carnival to your arcade with this timeless classic. Players throw the balls at the clowns on display, knocking them over for points. Hit clowns colored in red (via the LEDs) for double the points!

Bank two units together with the optional marquee.



## *Single Cabinet Dimensions:*

H: 110", W: 45", D: 120" Weight: 850lbs.

Electrical: 110V @ 2.5A

# Power Roll

**Made by:**

Sega Amusements

**Players Supported:**

1

**Features:**

Vibrant design

RGB LED fixtures

Spring-loaded lever

Linking marquee



Still one of the top redemption games on the market, no new venue should be without a Power Roll...or two! Players skillfully launch the ball up the rail ramp, the force used on the lever determining how far it goes. Whatever value the ball stops on, that's the number of tickets you win!



***Single Cabinet Dimensions:***

H: 102" W: 32" D: 85" Weight: 695lbs.

Electrical: 110V @ 1.8A, 198W



# Lil' Ticket Monsters

**Made by:**

BayTek Entertainment

**Players Supported:**

1

**Features:**

Physical spinning wheel

Colorful monster art

Plunger control

LCD screen for scoring



As a little brother to Monster Wheel and a cousin to the insanely popular Big Bass Wheel, Lil Ticket Monsters brings the same fun and excitement to venues but without taking up a ton of space. Easy-to-learn, difficult to master, spin the wheel to win tickets.



***Single Cabinet Dimensions:***

H: 106" W: 31" D:43" Weight: 386lbs.

Electrical: 115V @ 2.8A

# Whack 'N Win

**Made by:**

ICE

**Players Supported:**

1 per unit

**Features:**

RGB LED lighting

Carnival design

Red LED numerical counters

Soft mallet



As a part of ICE's carnival series of games, this helps transform your arcade into a theme park or carnival's midway!

Hit the target with the mallet as hard as you can to make the lights go up. Whatever value it lands on, that's the number of tickets that you win!



## ***Single Cabinet Dimensions:***

9' Model: H: 109" W: 42.5" D: 48" Weight: 400lbs.

11' Model: H: 136" W: 42.5" D: 48" Weight: 420lbs.





# Skee-ball Bowlers

**Made by:**

**Skee-Ball**

**Players Supported:**

**1 per unit**

**Features:**

Tried & tested construction

LED matrix display

Soft white LEDs



The original alley bowler can still play a strong role in the earnings of your arcade. Invented in 1908, Skee-ball machines are strong earners and a staple for many venues. These models represent the latest version of the classic but in case you want more flash, you can also check out the "Skee-ball Glow"



## ***Single Cabinet Dimensions:***

H: 85" W: 30" D: 123" Weight: 630lbs.

Electrical: 110V (220V available)



# Iceball FX

**Made by:**  
ICE

**Players Supported:**  
1 per unit

**Features:**  
RGB LED light show  
Classic gameplay  
"Ice white" balls  
Great for banking



The classic Ice Ball has leveled up with special FX! Maintaining the classic gameplay, this steps things up with a modern look, where RGB LEDs make for a mesmerizing light show.

Thanks to that alone, Iceball FX units are among the best earners in the business. Banking marquee is optional.



## ***Single Cabinet Dimensions:***

H: 84" W: 30" D: 123" Weight: 605lbs.

Electrical: 110V @ 3A



# VIDEO REDEMPTION



# MINECRAFT DUNGEONS ARCADE

**Made by:**  
Raw Thrills

**Players Supported:**  
1-4

**Features:**

Unique gameplay not on  
the console version

65" 4K screen; 500W sound  
Vends official cards



The best-selling video game on  
consoles is now an arcade game!  
Battle evil creatures across several  
levels; Use the cards to craft your  
character's weapon, armor, and  
more! New cards released annually.

***Single Cabinet Dimensions:***

H: 117" W: 72" D: 68"

Electrical: 120VAC/60Hz/5 Amps

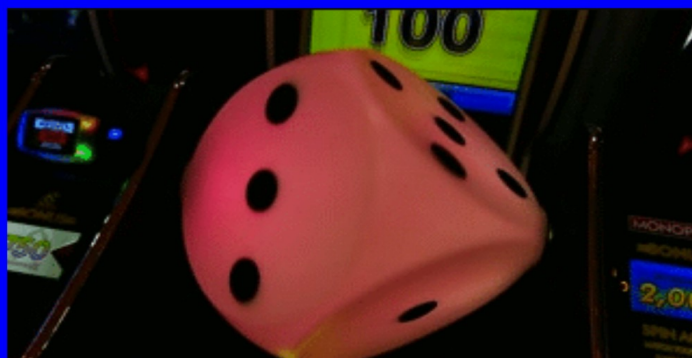


# Monopoly Roll-N-Go

**Made by:**  
**ICE**

**Players Supported:**  
**1-3\***

**Features:**  
2x vertically mounted  
HD screens  
Giant LED dice control  
Bank units w/ marquee



The iconic board game is back in arcades and taller than ever! Play a quick (yes, really) game of Monopoly by skillfully rolling the die and the spinning wheel landing on the best ticket value.

## ***Single Cabinet Dimensions:***

9' Model: H: 108" W: 52" D: 83"

10' Model: H: 119" W: 52" D: 83"

# NERF ARCADE

**Made by:**

**Raw Thrills**

**Players Supported:**

**1-2**

**Features:**

Licensed NERF game

65" 4K screen; 500W sound

4 stages

Easy-to-play



The popular soft dart guns are now an arcade redemption game! Blast targets for tickets across 4 themed arenas - the more points you get, the more tickets that you win!

***Single Cabinet Dimensions:***

H: 95" W: 58" D: 94-106"

Electrical: 115V @ 5A



# Wicked Tuna

**Made by:**  
**UNIS**

**Players Supported:**  
1-2 (SD) / 1-4 (DX)

**Features:**

Based on the hit TV show  
Fishing rod/reel controls  
Realistic Force feedback  
65" or 85" screen (SD/DX)



Pick your captain and cast your bait  
bait to hook the biggest fish possible.  
A fish radar helps you find your prey  
then once hooked, it will fight back  
as you reel it in. Snag as many fish as  
you can before time is up.

***Single Cabinet Dimensions:***

SD: H: 98" W: 51" D: 58" Weight: 1012lbs  
DX: H: 126" W: 103" D: 73" Weight: 2205lbs

# Hot Wheels: King of the Road

**Made by:**

Adrenaline Amusements

**Players Supported:**

1-4 or 1-6

**Features:**

2 models available

Steering wheel w/ pedal

Cameras for avatars

Licensed IP



Control your own Hot Wheels car while racing down the track against rivals. Collect coins for points and get to the finish line first in this chaotic racer

## ***Single Cabinet Dimensions:***

4-player: H: 105" W: 55" D: 78" Weight: 1500lbs.

6-player: H: 102" W: 59" D: 110" Weight: 1700lbs.



# Bigfoot Crush

**Made by:**

**UNIS**

**Players Supported:**

**1-2**

**Features:**

Drive a monster truck  
Simple steering controls  
2x 32" screens  
6 trucks, 3 courses



The iconic Bigfoot monster truck is now a video game that kids can enjoy for fun or for tickets. Select a real monster truck design then drive to crush cars.



## ***Single Cabinet Dimensions:***

H: 91" W: 49" D: 60" Weight: 441lbs.

Electrical: 110V / 220V

# Connect 4 Hoops

**Made by:**

**BayTek Entertainment**

**Players Supported:**

**1-2**

**Features:**

Innovative blend of two  
concepts

"Mixed Reality" blend of  
digital & physical



The innovative game that changed the industry is still available in two models - one with a projector and one with an HDTV. Gameplay is simple yet innovative - users play a game of the Connect 4 board game using basketballs. The most 4 connections made, the more tickets you win!



## ***Single Cabinet Dimensions:***

Projector Model: H: 138" W: 78" D: 150" Weight: 1900lbs.

HDTV Model: H: 108" W: 61" D: 112" Weight: 1200lbs.



# Space Invaders Frenzy

**Made by:**

**Raw Thrills**

**Players Supported:**

**1-2**

**Features:**

Unique take on a classic

Giant 8' LED screen

Play for tickets or fun

Force feedback guns



Space Invaders is back in arcades and BIGGER than ever. Using a huge 8' LED billboard, it captures the retro feel while standing out in any modern venue. Another top earner from Raw Thrills.

***Single Cabinet Dimensions:***

H: 117" W: 68" D: 100-112"

Electrical: 120V @ 5A

# Lane Master

**Made by:**  
**UNIS**

**Players Supported:**  
1-6 (linked)

**Features:**

Plays like a skeeball game,  
using a real ball  
2x 32" screens  
Adjust frames per credit



Video bowling levels up with this innovative blend of mini bowling and alley bowling. Sensors detect the speed and angle of the ball to translate that into the game. Play for fun or tickets.

## ***Single Cabinet Dimensions:***

Pro Model: H: 101" W: 26" D: 96" Weight: 474lbs.

Twin Model: H: 117" W: 65" D: 118" Weight: 1200 lbs.



Government	Percentage
Current government	75%
Previous government	25%





# Fast & Furious Arcade

**Made by:** Raw Thrills

**Players Supported:**

Up to 8 (linked)

**Features:**

2x 65" 4k monitors

Motion seat

QR Code Save System

Camera



Fast & Furious is back and its bigger than ever! Drive licensed supercars as you complete six dangerous missions. No game on today's market offers quite the spectacle that this does!

**Single Cabinet Dimensions:**  
**H: 106.75" W: 57.25" D: 119.25"**  
**Electrical: 110V @ 2.5A**





# Storm Rider 2

**Made by:**

Wahlap/Sega

**Players Supported:**

Up to 4 (linked)

**Features:**

47" monitor

Touchscreen mini display

Motion base/swivel seat

Twin cabinet style



Hop on your bike and ride the storm in this action-packed sequel that is only found in arcades. Swivel your bike, feel the motion, upgrade parts on your bike and more!



## ***Twin Cabinet Dimensions:***

H: 98", W: 120" D: 105" Weight: 2094lbs.

Electrical: 110V @ 19.5A, 2150W



# NFS Heat Takedown

**Made by:** Adrenaline Am.

**Players Supported:**

Up to 4 (linked)

**Features:**

43" 4k monitor

LED Matrix Header

Camera

Haptic Feedback



Need for Speed is back in arcades challenging players in more of a chase than a race. Take down opponents as the police are in pursuit. Top notch graphics & sound make this one not to miss!

***Single Cabinet Dimensions:***

H: 92" W: 41" D: 66" Weight: 650lbs.

Electrical: 110V @ 2.5A



# Halo: Fireteam Raven

**Made by:**

**Raw Thrills**

**Players Supported:**

**2 (DX) / 4 (Assault)**

**Features:**

2 models available

Display: 55" (DX) / 85" (AM)

Login using an XBL account

Assault Rifle molded guns\*



\*Assault Model only



The legendary Halo series makes the jump to arcades in this unique take on the IP that is not available on your Xbox or PC. Work as a team to take down the Covenant; Over 45 minutes of gameplay!

***Single Cabinet Dimensions:***

**DX: H: 100" W: 53.5" D: 83"**

**Assault Model(AM): H: 118" W: 104" D: 82"**



# Dead Heat Unleashed

**Made by:**

Bandai Namco

**Players Supported:**

Up to 4 (linked)

**Features:**

43" monitor

Camera

Feedback controls



From the same team who created Maximum Tune comes a sequel to Namco's Dead Heat. It features new cars, more tracks and cutting edge, vibrant graphics. Build your boost by hitting other cars.

***Single Cabinet Dimensions:***

H: 95.5" W: 41", D: 30" Weight: 654 lbs.

Electrical: 120V @ 4.75A, 600W



# Crazy Rafting

**Made by:**  
Wahlap/Sega  
**Players Supported:**  
1-2  
**Features:**  
55" HD monitor  
Motion Base  
Unique oar controller



A modern take on the classic "Rapid River" concept, players work to row down the stream while avoiding dinosaurs and other hazards that pop up. Best played with two people.

## ***Single Cabinet Dimensions:***

H: 102" W: 59" D: 93" Weight: 1047lbs

Electrical: 110V @ 17A, 1850W



# Pac-Man Chompionship

**Made by:**

Bandai Namco Am.

**Players Supported:**

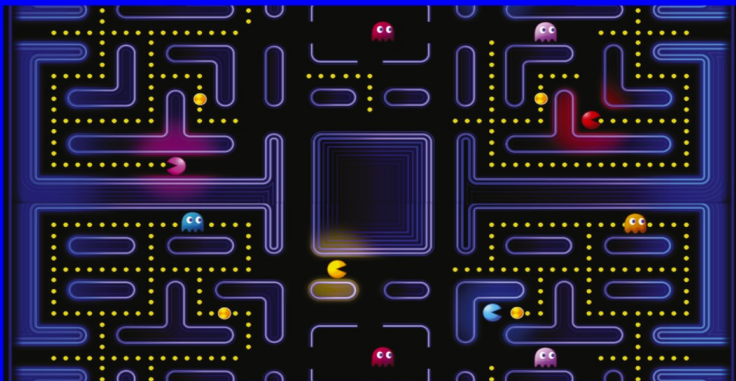
1-8\*

**Features:**

2 models available

Refreshed classic gameplay

\*Link two SD models for  
up to 8 players



Kids & adults alike know who Pac-Man is and in his latest arcade game, they can both enjoy chomping dots, ghosts, and each other! A sequel to Battle Royale from 2011, this game focuses on scores and power-ups, offering a ton of fun

## ***Single Cabinet Dimensions:***

SD: H: 90" W: 35" D: 45" Weight: 286lbs.

DX: H: 110" W: 57" D: 84" Weight: 600lbs.





# Asphalt 9 Legends Arcade

**Made by:**

**Wahlap/LAI Games**

**Players Supported:**

**Up to 4 (linked)**

**Features:**

**43" HD monitor**

**Camera; Facebook Login**

**Motion Base (DX & VR)**



Jump into one of several real world supercars and race for glory in this unique version of the home racing game. Available in three models, its one of the top racers out there!

## ***Single Cabinet Dimensions:***

Premium: H: 94" W: 41" D: 74" Weight: 551lbs.

DX: H: 97" W: 54" D: 85" Weight: 1069lbs.

Electrical: 110V @ 20A (DX)



# Mission: Impossible Arcade

**Made by:**

Sega Amusements

**Players Supported:**

2 (DX) / 4 (SDX)

**Features:**

2 models

55" HD monitor

Unique mounted pistols

2v2 competitive team play



Become a secret agent in this action-packed shoot 'em up. Join forces with a friend or compete against the other team as you use both your weapons and gadgets to put an end to the threats

## *Single Cabinet Dimensions:*

[DX] H: 104" W: 57" D: 67" Weight: 492lbs

[SDX] H: 113" W: 157" D: 103" Weight: 2778lbs.





# Mario Kart Arcade GP DX

**Made by:**

Bandai Namco

**Players Supported:**

Up to 4 (linked)

**Features:**

42" monitor

Camera

Feedback controls



The most popular racing game in the world is still available for arcades to have, with this arcade exclusive entry that isn't available on consoles. Play as one of your favorite characters in each race.

***Single Cabinet Dimensions:***

H: 94", W: 41", D: 63" Weight: 540 lbs.

Electrical: 110V

# Jurassic Park Arcade

**Made by:**

Raw Thrills

**Players Supported:**

1-2

**Features:**

55" HD screen

Mounted cannons

9 levels

Surround sound



Jurassic Park is the most iconic name in dinosaur entertainment around the world and this game is no different. Not available on home consoles, this still dominates earnings at arcades.

## ***Single Cabinet Dimensions:***

DX: H: 103" W: 53" D: 80" Weight: 900lbs.

Electrical: 120V @ 5A





# World's Largest Pac-Man

**Made by:**

**Bandai Namco Am.**

**Players Supported:**

**1-2**

**Features:**

8' LED display

Co-op gameplay

Play Pac-Man or Galaga

Display ads during attract



Pac-Man and Galaga are often the most requested classic games for any arcade to have but this giant piece allows you to offer them in a way that no one can get at home!

Includes co-op play so two people can play Pac-Man at the same time.



***Single Cabinet Dimensions:***

**H: 105" W: 69" D: Up to 112"**

**Electrical: 110V @ 5A**

# Super Bikes 3

**Made by:**  
**Raw Thrills**

**Players Supported:**  
Up to 8 (linked)

**Features:**  
47" HD monitor  
Swivel bike  
Ships in 1 of 4 colors\*  
Online leaderboards



The best-selling motorcycle racer on the market is back and sleeker than ever! Upgrade your bike and compete across 8 tracks, all in style with the eye-catching game cabinet.

## ***Single Cabinet Dimensions:***

H: 98.75" W: 45" D: 85" Weight: 660 lbs.

Electrical: 120V @ 5A



# Tomb Raider

**Made by:**

Adrenaline Amusements

**Players Supported:**

Up to 4

**Features:**

2 models (120" or 65")

Force feedback guns

60 min of gameplay



Join the legendary Lara Croft in a fight to survive the perils of a deadly island. Up to four players can join forces in this unique action arcade title that is based upon the 2013 console game.



***Single Cabinet Dimensions:***

65" Model: H: 84" W: 64" D: 54"

120" Model: H: 111" W: 107" D: 42"

# Cruis'n Blast

**Made by:**

Raw Thrills

**Players Supported:**

Up to 8 (linked)

**Features:**

42" HD monitor

Feedback controls

Unique cockpit design

PIN save system



Despite being on the market since 2017, Cruis'n is still one of the hottest games on the market. It is easy for anyone to play and has iconic racing action that players come back to time & time again.

***Single Cabinet Dimensions:***

H: 93", W: 44", D: 85"

Electrical: 110V @ 5A



# Injustice Arcade

**Made by:**

Raw Thrills

**Players Supported:**

1-2

**Features:**

43" HD screen

Easy controls

Vends cards

New cards renew interest



Heroes & villains from the DC Comics universe come together to battle in this arcade version of the mobile game. This offers unique, official cards that are used in-game and can be traded or sold afterwards.



## ***Single Cabinet Dimensions:***

H: 100" W:46.3" D: 33.6" Weight: Approx. 450lbs

Electrical: 120V @ 5A



# Big Buck Hunter Reloaded

**Made by:**

**Raw Thrills**

**Players Supported:**

**1-2**

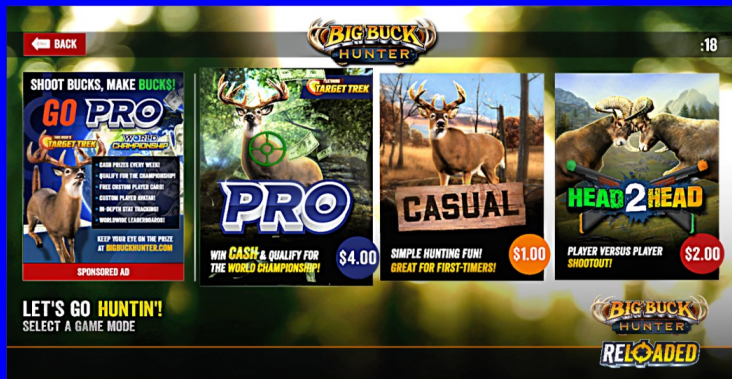
**Features:**

42" HD screen

Pump Action shotguns

Gun & drink holders

Online or offline models



No name dominates the video hunting scene like Big Buck. This is the ultimate version of the game, sporting HD graphics and several other games like Terminator & Zombies. Compete online against others in real-time & more.

**Single Cabinet Dimensions:**

H: 90" W: 41" D: 31" Weight: 400lbs.

Electrical: 120V @ 5A



# INTERACTIVE SPORTS





# Step ManiaX

**Made by:**  
Step Revolution  
**Players Supported:**  
1-2

**Features:**  
Over 400 songs  
Free mobile app  
SD & DX cabinets



Dance your heart out in the hottest dance arcade game to hit the market in years! Appeals to all ages and gets new songs via WiFi. Available in Standard & Deluxe models

## Cabinet Dimensions:

**Standard: H: 84" W: 70" D: 88" Weight: 550lbs.**

**Deluxe: H: 95" W: 70" D: 100" Weight: 1190lbs.**





# Swish & Big Show

**Made by:**

Wik

**Players Supported:**

1-2

**Features:**

RGB LED lighting &  
displays

Easy to move

Waterproof design



These two basketball machines are made to impress in any arcade, The Big Show being larger and coming with a mesmerizing color LED tunnel that reacts to players' ball throws. Bank multiple units together. Also available in a smaller Kids model.



## ***Single Cabinet Dimensions:***

Swish: H 98-106", W 39", D 104" Weight: 838lbs.

Big Show: H: 98~106" W: 39" D: 97" Weight: 828lbs.



# Pump It Up XX

**Made by:**

Andamiro USA

**Players Supported:**

1-2

**Features:**

Over 500 songs

4-speakers & 2 subwoofers

55" HD screen



Celebrating 20 years of video game dancing, this is the definitive version of "PIU." More songs and features than ever, AM.PASS and online support bolster the appeal of this game to fans.

**Cabinet Dimensions:**

**H: 94" W: 70" D: 93" Weight: 1100lbs.**

**Electrical: 110V @ 650W, 6A**



# DC Heroes & Villains

**Made by:**

Bandai Namco Am.

**Players Supported:**

2

**Features:**

Licensed from DC Comics,  
starring Batman, Wonder  
Woman and more  
Plexi shields



Few air hockey tables feature a licensed theme, so this is a rare breed, using the power of popular comic book heroes and villains for its basis. One side is the heroes, the other the villains, allowing players to choose who they want to be! Also features LED lighting, digital music and puck barriers



***Single Cabinet Dimensions:***

H: 20" W: 44" D: 78" Weight: 450lbs.

Electrical: 120V @ 5A

# Boxing Machines

**Made by:**

Kalkomat / Wik

**Players Supported:**

1-6

**Features:**

Rugged, tested designs

Various styles available

Fast ROI

Many options available



No matter which boxing machine you go with, you're in for a quick turnaround on your investment. A timeless game for bars and fairs, placing a boxer into the right venue will draw in the players for a full cashbox. Customize the art to fit your brand or venue theme and ask us about options, including Combo Boxers, ticket dispensers and more.



## ***Single Cabinet Dimensions:***

Varies, check individual website listings

Electrical: 110V / 220V



# Air FX Series

**Made by:**

**ICE**

**Players Supported:**

**2**

**Features:**

4 table designs

RGB LED special FX

Side marquee w/ scores

Micro FX not pictured



Following in the footsteps of their popular Iceball FX series, ICE has brought the same idea to their air hockey tables, infusing them with RGB LEDs for an entertaining light show. NHL branding is available on the AirFX, with a team and their colors; The Extreme FX has a curved playing surface; and the MicroFX is a table made for kids.



## ***Single Cabinet Dimensions:***

Standard/NHL: H: 62" W: 49" D: 93" Weight: 554lbs.

Extreme: H: 62" W: 48" D: 94" Weight: 600lbs.



# Slam 'N' Jam Ultra

**Made by:**

LAI Games

**Players Supported:**

1-2; 8 linked

**Features:**

32" HD monitor

RGB LED trim

Exciting soundtrack

5 rounds of play



Slam 'N' Jam is back and better than ever! Now sporting a full HD screen, this goes beyond just shooting hoops by offering play in 5 separate rounds. Players must reach a certain score to pass to the next round. The fun is enhanced with an LED light show and adrenaline-pumping soundtrack. Link up to 8 units at once!



## ***Single Cabinet Dimensions:***

H: 103" W: 38" D: 101" Weight: 816lbs.

Electrical: 110V



# Power Puck Fever

**Made by:**  
**UNIS**

**Players Supported:**  
**2**

**Features:**

Sleek look  
Multi-puck play  
RGB LED lighting  
Dual ticket dispensers



Here is a futuristic looking air hockey table that employs a popular option - multi-puck play. All pucks slide onto the table from the marquee scoreboard on the side, but this table looks to keep things from getting too chaotic by only putting on large pucks (not large+small as some multi-puck tables). Also has a scratch resistant playfield.



***Single Cabinet Dimensions:***

H:67.5" W: 93.5" D: 61" Weight: 574lbs.

Electrical: 120V

# Arctic & Big Wave

**Made by:**

Wik / IGPM

**Players Supported:**

2

**Features:**

RGB LEDs

Weatherproof design

Digital Music

Curved play surface (Big Wave)



Air hockey is one of the mainstays of any entertainment venue and both the Arctic & Big Wave tables stand out with their design. The Big Wave even features a unique curved playfield surface. On top of that, both are "weatherproof" tables, meaning that you can operate outdoors too!



## ***Single Cabinet Dimensions:***

Both tables: H: 34" W: 50" D: 93" Weight: 450lbs.

Electrical: 120V @ 390W (230V available)



# Hyper Pitch

**Made by:**  
LAI Games

**Players Supported:**  
1-2

**Features:**  
Colorful, bright design  
RGB LED cages  
Giant LED counters



Bring the Great American Past-time to your venue with this unique sports game that is focused on baseball pitching. Both speed & accuracy are measured against the durable backboard target; Activate multiplayer mode and take turns pitching to see who is the best!  
Ticket dispenser included

## ***Single Cabinet Dimensions:***

H: 118" W: 45.75" D: 119.5" Weight: 981lbs.

Electrical: 110V / 220V

# Galaxy Collision

**Made by:**

**Barron Games**

**Players Supported:**

**2-4**

**Features:**

Square shaped table

Goal Gates for each player

Overhead lightbar



Most air hockey tables are shaped like rectangles, only offering 4-player configurations for double-wide sizes. Not with the Galaxy Collision! It is shaped like a square, giving each player a side of the table. Gates will close for players who have lost or not participating. Easy to customize, you can get your brand on the table as well!



## ***Single Cabinet Dimensions:***

H: 31" (w/o topper) W: 78" D: 78" Weight: 512 lbs.

Electrical: 110V



# NBA Hoops

**Made by:**  
ICE

**Players Supported:**  
1-4; 16 linked

**Features:**

NBA Licensed  
RGB LED trim

LED Dot Matrix display  
Linking marquee available



A staple of arcades and FECs every where, the NBA Hoops brings basketball fun to your venue with the NBA license. Even better, you can pick to customize the game with any of the 30 NBA teams (extra charge). Shoot hoops against the clock for your personal best or challenge a friend or two for the ultimate in arcade sporting fun!



***Single Cabinet Dimensions:***

H 108", W 30", D 120" Weight: 750 lbs.

Electrical: 110V @ 3A

# Street Basketball

**Made by:**  
Saint Fun

**Players Supported:**  
1-4; 16 linked

**Features:**  
Tried-and-True design  
RGB LED trim  
Red LED displays  
Easy to move



Our most popular option in arcade basketball may not have all the bells and whistles that come with other basketball machines now, but it is still a great option for a venue on a budget. Thanks to its low price, great reliability, and timeless gameplay, it will pay itself off quickly and keep customers coming back for more.



## ***Single Cabinet Dimensions:***

H: 99", W: 41", D: 93" Weight: 578lbs.

Electrical: 110V



# VIRTUAL REALITY





# King Kong of Skull Island

**Made by:**

Raw Thrills

**Players Supported:**

1-2

**Features:**

4K HP REVERB2 headsets

Motion seat base

Gesture sensors

Wind effects



King Kong is now in arcades like never before. Players don one of the HP Reverb2 headsets where they are then immersed into KONG's world, and it's more than just a ride; Swat at enemies using your hands for points. Three intense chapters and top-notch graphics and sound will keep players coming back for more, meaning it will be the KING of earnings at your venue!



## ***Single Cabinet Dimensions:***

H: 114" W: 49.5" D: 122" Weight: 1500lbs.

Electrical: 120V / 60Hz : 10A each inlet (20A total)





# MotoGP VR

**Made by:**  
Raw Thrills

**Players Supported:**  
1 per cabinet (8 total)

**Features:**

4K HP REVERB G2 headsets  
Realistic bike controller  
Updated tracks & rosters  
Wind effects



MotoGP is back in arcades and more immersive than ever! Feel like you're on a real MotoGP course as everything about this game screams authenticity, from the bike controller, to the updated team rosters and circuits. The high-quality VR headset immerses you into the race like nothing else on the market, although players can play without the headset if they choose. Link up to 8 units.



***Single Cabinet Dimensions:***

H: 96", W: 43", D: 83"

Electrical: 110V @ 5A



# VR Agent

**Made by:**

3MindWave / Sega

**Players Supported:**

1-4 (2 twins, linked)

**Features:**

Unique light-gun  
controller w/ integrated  
VR headset  
Wind effects



Become a secret agent in this revolutionary arcade game that blends elements of a light-gun & first-person shooter, along with VR. The unique gun puts you into the action where you are taking on hordes of bad guys across five levels.

Cabinets are made in twin configurations and can link two together so up to four people can play; Bystanders can watch the active play on the 50" HD screens.



## ***Single Cabinet Dimensions:***

H: 93" W: 129" D: 102" Weight: 926lbs.

Electrical: 110V@12A, 1350W





# Virtual Rabbids: The Big Ride

**Made by:**

LAI Games

**Players Supported:**

1-2

**Features:**

5K HTC VIVE PRO 2 headsets

D-Box motion seat base

Wind effects

Six ride films



■ ■ ■ ■  
The standard bearer for virtual reality amusement motion rides is even better than ever with the new "UHD" upgrade.

Users still experience one of the six rides on the D-Box motion seats, immersing into the wacky world of the Rabbids, but now it uses upgraded HTC VIVE headsets for 5K quality resolution. This will mean higher earnings for an already top notch earner!

■ ■ ■ ■  
***Single Cabinet Dimensions:***

H: 136" W: 60" D: 119.3" Weight: 1289 lbs.

Electrical: 120V



# Ultra Moto VR

**Made by:**

IGS / UNIS

**Players Supported:**

1-8 (4 twins, linked)

**Features:**

3 Glasses Blubur S2

Swivel bike controller

24 courses

Motion base



Ultra Moto VR is an original, over-the-top yet immersive racing experience that ships in a twin model (2 units setup as 1 cabinet). Players hop onto their choice of 12 customizable motorcycles and race on one of the 24 tracks. The game uses a motion base in addition to the swivel bike to simulate the road conditions and if players prefer it, they can play without using the VR headset.



## ***Single Cabinet Dimensions:***

H: 93" W: 105" D: 85"

Electrical: 110V @ 5A



# INSTANT PRIZE GAMES





# Crane Machines

**Made by:**

Various

**Players Supported:**

Various

**Features:**

Modern cranes will support many options on claws, customization and more



You can't go wrong with a timeless classic like a crane machine, and we've got the latest claw games from every major manufacturer in the prize market. Our best sellers include:

Neon World (S&B Toy); Capto Crane (Sega);

Carnival Cups Crane (Touch Magix); Junior Cranes (S&B Toy);

Happy Train Crane (Coast-to-Coast); Route 66" (S&B Toy)



***Single Cabinet Dimensions:***

Visit our Cranes / Prize Merchandisers Category





# Pushing Points

**Made by:**

Komuse / Sega Am.

**Players Supported:**

1

**Features:**

Joystick/button controls

X/Y/Z rod mechanism

Adjustable main shelf

Prize shelves



Pushing Points is a merchandiser game that challenges players to poke & push the prizes off of the shelf grating. Navigate the rod on the X & Y axis using the joystick, then when it looks good, hit the button and watch to see if the rod pushes the prize. If it falls off the edge, claim your prize! Also features showcase shelves on the back; Great for candy.



## ***Single Cabinet Dimensions:***

H: 101" W: 48" D: 31" Weight: 463lbs

Electrical: 110V @ 1.5A, 160W



# Over The Edge

**Made by:**  
UNIS

**Players Supported:**  
1-2

**Features:**

Simple controls  
Video & physical gameplay  
Self-contained marble  
recycling system



Over The Edge is an innovative merchandiser that combines elements from three popular genres into one: video games, marble pusher, and instant prize merchandisers. Play the video game to stop the light for a chance to drop a prize or marbles; Prizes drop onto the marble pusher base. Once a prize goes 'over the edge,' claim it below!



***Single Cabinet Dimensions:***

H:78" W: 59" D: 43" Weight: 816lbs.

Electrical: 110V / 220V





# Cut Ur Prize

**Made by:**

**S&B Toy**

**Players Supported:**

**1**

**Features:**

Simple controls

Adjustable cutter

Holds up to six prizes

Available in White or Black



Cutters are making a comeback and Cut Ur Prize is leading the charge! Players first line the cutter up horizontally by holding the button, then push and hold a second button to make the cutter move forward. Once let go, the cutter mechanism stops and scissors together. If the string is cut, the prize falls below to be claimed!



***Single Cabinet Dimensions:***

Give us a call



# Safe Cracker

**Made by:**

Andamiro USA

**Players Supported:**

1

**Features:**

Single-button control

Disc mechanism

Seven prize shelves

Skill-based play



Can you crack the safe to win the prize? Mimicking a safe, players holds the button down to start the game and keep it pressed as the prize disc rotates counterclockwise. Let go to stop the disc (before the 30 seconds are out) to hopefully win one of the seven prizes inside!



***Single Cabinet Dimensions:***

H: 92" W: 37" D: 40" Weight: 750lbs.

Electrical: 110V @ 2.5A, 300W





**ARCADE SALES & RENTALS**  
**1.800.550.0090**  
**[PrimeTimeAmusements.com](http://PrimeTimeAmusements.com)**