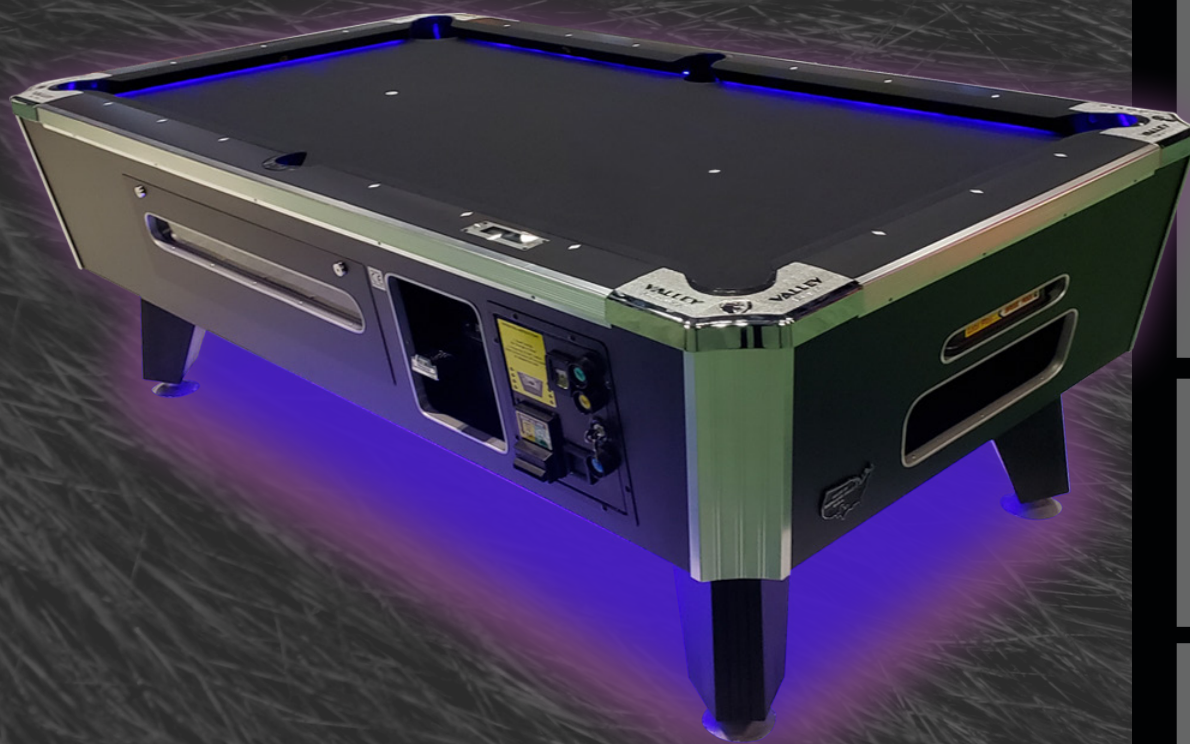


COIN AND DBA POOL LED LIGHTING NOW AVAILABLE



Don't be afraid of the dark...

Take the player-preferred features of the Valley ZD-11
...and add LED Lighting
A winning combination in any location





VALLEY

TOURNAMENT QUALITY TABLES WITH LED LIGHTING



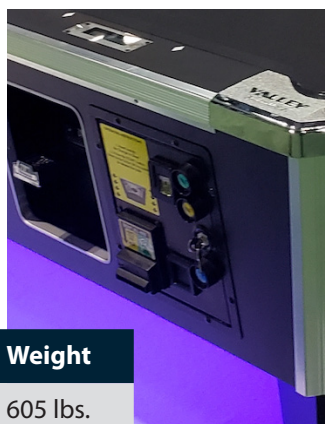
Valley Panther LED tables Available in 88", 93" & 101"

Tasteful LED lighting has been added to the tournament-tested construction of the Valley Panther below the cushions, inside the pockets and underneath the cabinet. The lighting is powered by a standard electrical outlet, and location-adjustable to the level and intensity best suited to your players.

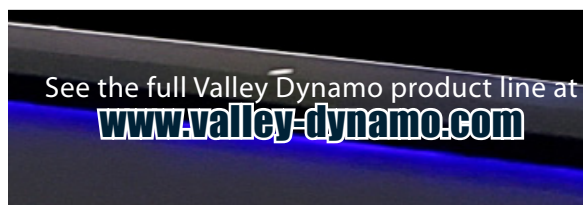
The color combination of a black laminate and black cloth allow for the LED lighting to look its best. While other cloth colors can be ordered, months of testing found the black-on-black combination to be most attractive.

The fully-programmable DBA-equipped Panther ZD-11X, the standard Push Chute Panther ZD-11, and the non-coin Panther are all available with LED lighting. Each model can be ordered in 101", 93" and 88" sizes.

We have a table perfect for your location's needs.



Specification	Length	Width	Height	Slate	Weight
88" Tables	88"	50"	31"	3/4"	605 lbs.
93" Tables	93"	53"	31"	3/4"	670 lbs.
101" Tables	101"	56"	31"	7/8"	845 lbs.



Product details and specifications subject to change. LED lighting enhanced for artwork
Images are as accurate as possible. Contact your local dealer to view the exact colors

VD2020_LEDPantherPool

Valley's LED pool tables take our no-compromises approach to a Tournament Quality table for the same play experience... Then adding beautiful and functional LED lighting

- Valley's Competition Cushion Rail system features a lively bounce and tournament-tested action, with simple maintenance to keep the Operator and Location happy and functional.
- Our ZDX electronics package allows not just Bill Acceptor functionality, but flexible pricing including bonus levels, happy hour, league play and free play.
- Solid, one piece, imported slate.
(Thickness varies by table)
- Professional quality leg levelers allow one person to level the table with a standard wrench.
- Tapered corners and legs for an aggressive stance.
- Valley Teflon Ultra Stain-Resistant cloth looks newer, longer.



7115 Belton St.
Richland Hills, TX 76118
972.595.5300

sales@valley-dynamo.com

For International Sales:
international@valley-dynamo.com