

Operation Manual

Theme Park – Smile 2.0



THIS OPERATION MANUAL IS IMPORTANT TO YOU.
PLEASE READ IT BEFORE ASSEMBLING AND USING YOUR THEME PARK.

Contents

Unpacking and assembly Theme Park

Unpacking & setup instructions for Theme Park.....	A
--	---

Unpacking and assembly

Unpacking.....	1
In-Shop Assembly	1

Safety

Warnings & Notices	2
--------------------------	---

Configuration

Entering the configuration and adjustment utility	6
<i>Configuration:</i>	7
<i>Service Credits:</i>	7
<i>Current Meter Report:</i>	7

Navigating the Configuration and Adjustment Utility..... 8

Configuration Tab.....	9
<i>General Settings:</i>	9
<i>Location Settings:</i>	10
<i>Security:</i>	10
<i>Camera Settings:</i>	10
<i>Payment Methods:</i>	10
<i>Pricing:</i>	10
<i>Duplicate Prints:</i>	10
<i>Volume:</i>	10
Programs Tab	10
<i>Sub-Menu Options:</i>	11
Reports Tab	13
Timing and Upsell Tab	13
Help Tab.....	14

Configuration Safe Mode..... 14

Meter reports

Meter reports	14
---------------------	----

4th Frame Logo, 4th Frame Coupon & 4x6 Watermarks

What are they?	16
4th Frame Logo	16
4th Frame Coupon (Promotion).....	16
4x6 Watermarks	16
Logo/Coupon & Watermark Image Requirements.....	17
4th Frame Logo/Coupon & 4x6 Watermark Creation	18
Enabling/Disabling 4th Frame Logo/Coupon & 4x6 Watermark	18

Loading 4 th Frame Logo, 4 th Frame Coupon & 4x6 Watermark to Booth.....	19
Theme Song.....	19
Custom Fun Border Setup Instructions.....	20
What are they?	20
Fun Border Image Requirements	20
Fun Border Creation	21
Loading Custom Fun Borders.....	21

Attract Mode Configuration Tool

Introduction	24
Downloading Installation File	24
Install Attract Mode Tool on Smile 2.0 Photo Booth.....	24
Preparing Images for Slideshow	25
Ordering Images for Slideshow.....	25
Adding Slideshow Images onto USB Flash Drive.....	25
Enabling Image Slideshow.....	26
Enabling Default Video Attract Mode	27

Meter Reports

What is it?.....	28
How do I view it?	29
How do I interpret it?	29
Description	29
System Summary	29
<i>Operator Name</i>	29
<i>Operator Phone</i>	29
<i>Location Name</i>	29
<i>Location Type</i>	29
<i>Report #</i>	29
<i>Date/Time</i>	29
<i>Photobooth Software</i>	29
<i>Printer ID Number</i>	29
<i>Freeplay Prints</i>	29
<i>Freeplay Shares</i>	30
<i>Paid Prints</i>	30
<i>Paid Shares</i>	30
<i>Total Errors</i>	30
<i>Current Paper Remainig</i>	30
<i>Service Credits</i>	30
Revenue Summary	30
<i>Initial Print Revenue</i>	30
<i>Upsell Revenue</i>	30

<i>Cash Earned</i>	30
<i>Credit Earned</i>	30
<i>Total Earned</i>	30
<i>Location Split (%)</i>	30
<i>Operator Split (%)</i>	30
Daily Summary	31
<i>Start/End</i>	31
<i>Qty</i>	31
<i>Money In</i>	31
<i>Stock</i>	31
Button Controls	31
Detailed Report	32
Pricing	33
<i>Product Type</i>	33
<i>Price</i>	33
<i>Quantity</i>	33
<i>Money In</i>	33
Lifetime	33
<i>Product Type</i>	33
<i>Quantity</i>	33
Network Connectivity	
Wireless or Wired Internet Access	34
What are the Choices	34
Are you using a wired connection?	35
Are you using WIFI as WAN or a 4G/3G Wireless Broadband Connection?	35
Step 1: Accesing the web browser	35
Step 2: Using the first time setup wizard	35
STEP A	36
STEP B	36
STEP C	36
STEP D	36
Step 3: Modem support & updates	36
<i>To update your firmware, follow the steps below.</i>	36
Step 4-1: If you are using WIFI as WAN	37
Step 4-2: If you are using a 3G/4G broadband network	38
Step 5: Setup system automatic reboots	39
Step 6: Setup Failure checks	40
Additional help	41
Remote Access	
Introduction	42

Register for LogMeIn Free	42
Downloading LogMeIn Installation File	42
Install LogMeIn on Face Place Photo Booth	43
Configure LogMeIn for use alongside Photo Booth	46
Connecting to Photo Booth using LogMeIn	47
Starting Remote Control	49
From the Home page.....	49
From the Host Main Menu	49
From the Host Dashboard	49
Once Connected.....	50
Working with the Photo Booth using LogMeIn	50
Hardware (Specific)	
PC Computer connections	52
Hardware generic	
Printer description	54
Operating requirements	54
Equipment characteristics	54
Loading media (Film and paper)	55
Ink ribbon installation	55
Ink ribbon installation	56
Paper roll assembly	57
Paper loading	57
Paper feeding mechanism.....	58
Transportation requirements.....	59
Credit card activation (If installed)	
Credit Card Reader Activation Instructions	60
<i>Instructions:</i>	60
Maintenance	
Booth-Wide inspection	61
Camera window cleaning	61
Printer inspection	61
Replacing Fluorescent Light Bulbs	62
Replacing the dome lamp (If applicable)	62
Care and handling of your touchscreen	62
Troubleshooting	
Printer test	63
Using troubleshooting tables	64



Unpacking and assembly Theme Park

- ***Unpacking & setup instructions for Theme Park***

1. Remove the shrink wrap.



2. With one person supporting the Seat Top, remove the 4 bolts (2 on each side) that join the Seat Top and the brackets on the Seat Unit.





3. Remove the 6 bolts from the shipping brackets that join the Seat unit and Camera Unit.



4. Remove the 2 bolts that secure the Seat Unit to the pallet. Raise the levelers if necessary.





5. Take the Seat Unit off the pallet.
6. Remove the 4 bolts from the shipping brackets that secure the Seat Unit Base and Camera Unit. Bring down the Seat Unit Base and the Diamond Plate.





7. Remove the 4 bolts (found inside the Camera Unit) that hold the base of the Camera Unit to the pallet. Raise the levelers if necessary.

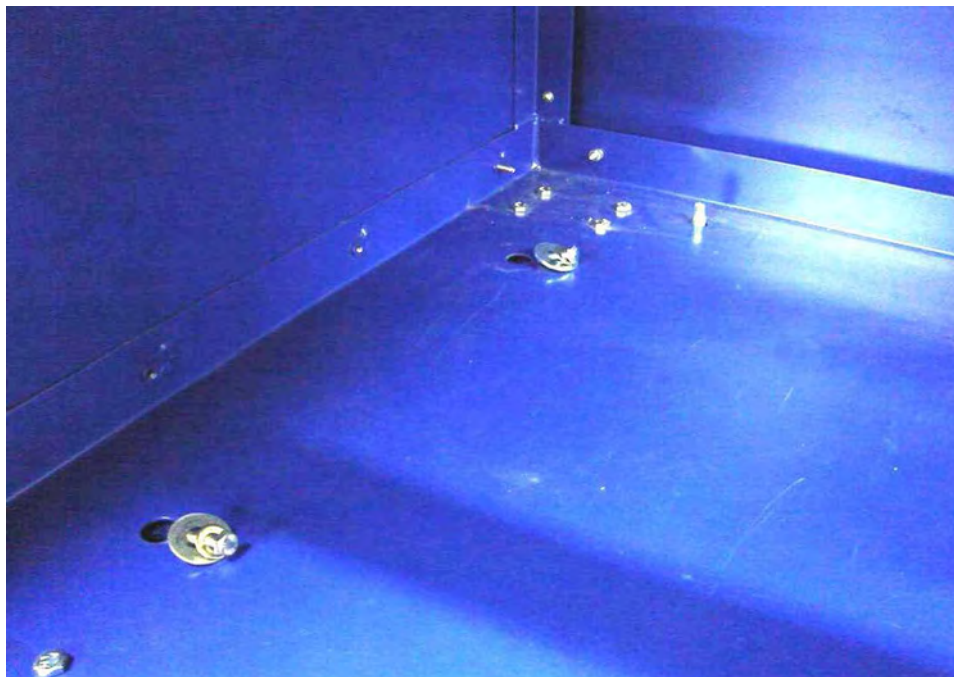


8. Push the Camera Unit to edge of the pallet. Carefully tilt over while someone pulls the pallet from underneath.





9. Roll Seat Unit Base under the Camera Unit. Bolt Seat Unit Base down using 2 - 1 1/4" bolts (with a 1/2" plain washer and a 5/16" plain washer on each bolt).

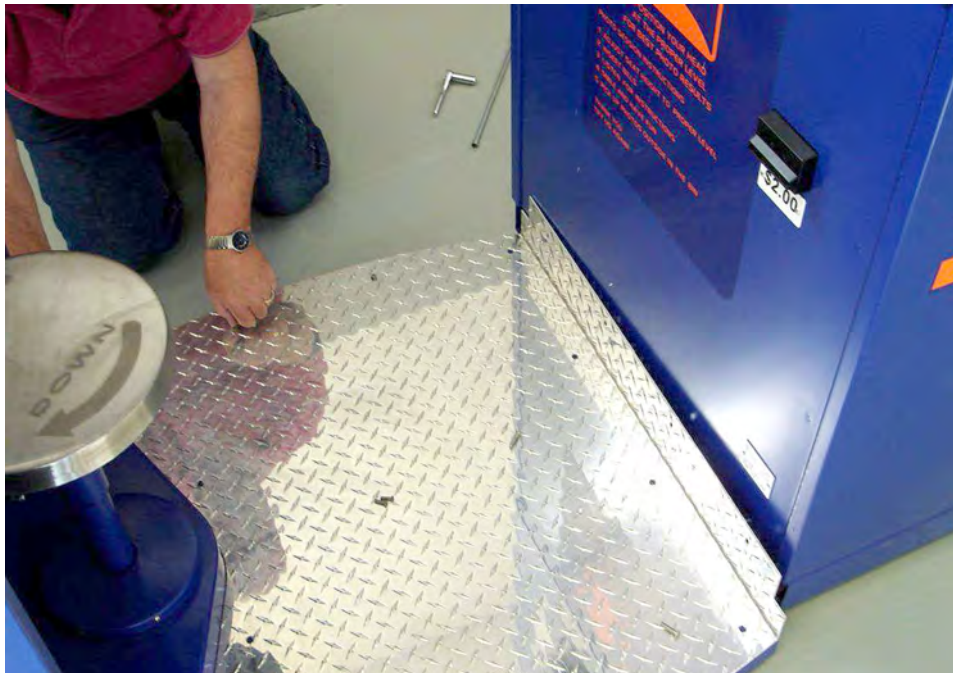




- Using 12 bolts (6 - 1/2" bolts and 6 - 1" bolts), attach the Seat Unit to its base. Use the 1" bolts for the horizontal holes on the bottom of the Seat Unit. Use a 5/16" lock washer with each bolt.



- Using 12 flat-head, 3/4" security screws, screw down the Diamond Plate to the Seat Unit Base.





- Using 4 button-head, 1" security screws, screw the Diamond Plate to the Camera Unit.



- Using 2 people, carefully lift the Seat Unit top over the Seat Unit and Camera Unit.





14. Before setting the Seat Unit Top down, make sure to pass the Seat Unit Top light power cord through the top of the Camera Unit. Pull cord from the inside of the Camera Unit.



15. Set the Seat Unit Top down on the Seat Unit side first. The 2 short, white tabs on the bottom sides of the Seat Unit Top stay outside of the Seat Unit (visible if inside the booth). The long, white tab (found on the bottom of the Seat Unit Top) gets inserted into the Seat Unit.





16. Using 4 button-head, 1" security screws, screw the other side of the Seat Unit Top onto the Camera Unit.



17. Using 7 button-head, 1/2" security screws, screw the Seat Unit Top to the Seat Unit. Some shifting may be required in order to properly align the holes.

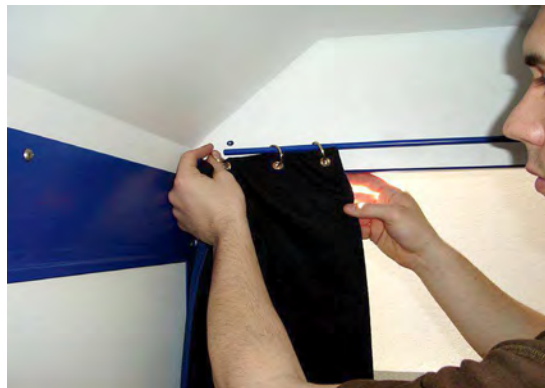




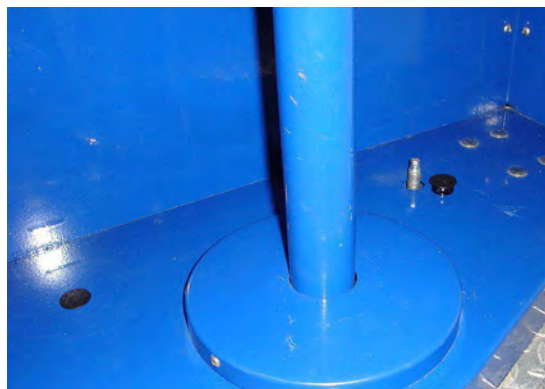
18. Slip the curtain rings into the holes on the curtains.



19. Remove the 2 button-head, 1/2" security screws on the brackets that secures the curtain rods. Remember to remove the brackets found on the Seat Unit side and not the Camera Unit side, as these brackets are welded to the curtain rods.
20. Slide the bracket off of the curtain rod and slide the curtain rings over the rod.
21. Slide the bracket back on the curtain rod and screw back onto the Seat Unit.




22. Repeat steps 19 - 21 for the remaining side.
23. Screw down the 2 levelers on the Seat Unit and install the 2 black, safety caps.






Unpacking and assembly


• Unpacking

	<ul style="list-style-type: none"> • The photo booth ships on a skid. • The major components are located in the main cabinet.
---	---

	English	Français
	<p>The photo booth is very heavy. It also contains fragile parts. Movement of photo booth requires at least two people.</p>	<p>Le photomaton est très lourd. Il contient aussi des pièces fragiles. Il faut avoir deux personnes pour bouger le photomaton.</p>

1. Remove all items from the shipping containers. Inspect the cabinet exterior units for damage. Pay special attention to cabinet edges, seams and corners.
2. The door keys are either located in the picture chute, on the booth's side or on the curtain rails. Remove the keys.
3. The service door is on one side of the Printer unit. Unlock and open the service door. Inspect the cabinet interior for signs of damage. Check all major assemblies to assure that they mount securely.
4. Check to see that cable connectors are correctly secured. Don't force connectors. They're keyed to fit in only one location. Bent pins and reversed connections may damage your photo booth and void the warranty.
5. Check to see that all booth electronic devices plug into the power strip inside the booth. Make sure that none of the power plugs are loose.
6. Check the wiring harnesses for disconnected plugs, frayed wires, shorts or other abnormalities.

• In-Shop Assembly


	English	Français
	<p>Avoid overloading booth power support circuit. Never plug a nonbooth circuit, tool or appliance into the booth power strip.</p>	<p>Évitez de surcharger le circuit d'alimentation électrique de photomaton. Ne branchez jamais dans la prise électrique : un circuit, un outil, ou un appareil qui ne fait pas partie du photomaton.</p>
	<p>FOREIGN POWER. The photo booth operates on 120VAC, 60 Hz power. To operate this booth on different power specifications, you must install a line-conversion transformer. Without this transformer, the photo booth may malfunction, start a fire, or cause personal injury.</p>	<p>PUISSANCE ÉTRANGÈRE. Le photomaton fonctionne en 120 volts c.a., puissance de 60 Hz. Pour utiliser ce photomaton avec les spécifications de puissance différentes, il faut installer un transformateur de conversion. Sans ce transformateur, le photomaton peut mal fonctionner, prendre feu, ou causer dommage à la personne.</p>




Safety

• Warnings & Notices

English



WARNINGS



- To assure safe operation, observe specifications, notices and cautions in this document. We accept no responsibility for damage or injuries arising from improper use of this product.
- Prevent electrical shocks and equipment damage! Before connecting or disconnecting the cables or changing the paper, disconnect booth AC power. Switching off power at the booth switch still allows power to enter the booth. You may still be exposed to live current.
- Prevent shock hazards! Only plug the AC power cord into a grounded, three-prong AC outlet. Never defeat or remove the power plug ground prong.
- Don't touch exposed wires or moving parts. For example...
 - Power supply modules
 - The IO board
- Touching these parts could cause a laceration, shock, or other injury. A printer malfunction and data loss might also result.
- Never touch the thermal print head, or head area. The print head operates at an extremely HOT temperature. Touching it might cause a burn or other injury.
- Every time you replenish paper, remove the residual paper from the machine. (Scrap paper from vended photo strips). Otherwise, paper debris may cause a printer jam, or, even poses a fire hazard.
- When cleaning the head, follow the directions in the Mitsubishi manual. Never use cotton, wool or other fabric swabs, because they leave lint behind. This lint poses a fire hazard.
- The printer contains an automatic time-out mechanism. This timer protects the print head against overheating, smoke, or fire. Excess power or voltage during a time interval causes printer shutdown. Improper use of this product might cause overheating, smoke and fire.
- Printer protective circuitry regulates the length of time under power. Printer circuits also regulate power applied to the print head and motor. If you replace or tamper with printer circuitry, components might overheat, smoke or burn.
- Only use Mitsubishi FP2000 Media (Apple Industries part # FP2000) in the printers. Use of other media will cause the photo booth not to work and may cause poor image quality and printer damage. Using other media will void your warranty.



- The print head and associated parts are very delicate.
 - Touching the print head or head area might cause a printer malfunction or data loss.
 - Avoid contacting the print head area with metal objects such as tweezers or screwdrivers.
 - Touching the print head or associated parts may deposit dirt. Dirt can degrade the print head heating element. Dirt deposits can pick up a charge and promote static electric damage.
- Avoid static electricity! While servicing the print head or printed circuit boards (PCB), use proper body grounding procedures.
- If condensation occurs, don't turn on the photo booth. Otherwise, you might damage the printer and/or the electronics.
- Make sure that no dust collects on the media. Never operate booth components in areas containing dust, dirt, and metallic powder. Contaminants affect print quality, camera operation, circuit board reliability and DBV operation.
- Never pull the media out while the printer is printing. Pulling the paper in this way can damage both the media and the delicate print head.
- Follow media-loading instructions precisely. Also, if instructions do not mention a particular operation, then do not do it. Otherwise, you might jam or damage the print head, heating element and gears.

Français

**ATTENTION**

- Pour assurer la sécurité de fonctionnement, observez les spécifications, les avis, et les avertissements dans ce document. Nous n'acceptons pas de responsabilité pour des dommages ou des blessures qui se produisent des usages abusifs de ce produit.
- Prévenez des décharges électriques et le dommage à l'équipement ! Avant de connecter ou déconnecter les câbles ou de changer le papier, déconnectez l'adaptateur d'alimentation c.a. du photomaton. En coupant le courant électrique par l'interrupteur du photomaton, le courant électrique toujours entre le photomaton. On peut être exposé du courant de la ligne.
- Prévenez les dangers de choc ! Seulement met la corde de puissance c.a. dans une prise électrique c.a. qui est adéquatement mise à la terre. Ne dégradez jamais ou n'enlever jamais la broche de mise à la terre de la fiche.
- Ne touchez pas les fils exposés ou les pièces mobiles. Par exemple...
 - Les modules d'alimentation
 - Le panneau IO
- En touchant ces pièces, il est possible de causer une laceration, un choc, ou des autres blessures. Un autre résultat peut être un mal fonctionnement d'imprimante ou la perte de données.



- Ne touchez jamais la tête d'impression thermique ou la région de tête. La tête d'impression fonctionne à une température très CHAUDE. En la touchant, il est possible de causer une brûlure ou d'autres blessures.
- Chaque fois vous remettez du papier, enlevez le papier résiduel de la machine. (Papier brouillon des bandes vendues). Sinon, débris de papier pose un risque d'incendie.
- En nettoyant la tête, suivez les directions dans le manuel Mitsubishi. N'utilisez jamais des écouvillons de coton, de laine, ou d'autres tissus, parce qu'ils laissent tombés des peluches. Les peluches posent un risque d'incendie.
- L'imprimante contient un mécanisme de temps imparti automatique. La minuterie protège du sur chauffage, de la fumée, et du feu de la tête d'impression. Une surabondance de pouvoir ou voltage, pendant une durée, cause une fermeture d'imprimante. Mal usage de ce produit peut causer sur chauffage, fumée, et feu.
- Les circuits protectifs d'imprimante réglementent la durée sous pouvoir. Les circuits d'imprimante aussi réglementent le pouvoir appliqué à la tête d'impression et moteur. Si vous remplacez ou manipulez les circuits d'imprimante, composants pourront sur chauffer, fumer, ou brûler.
- Seulement utilisez média Mitsubishi FP2000 (pièce d'Apple Industries n° FP2000) dans les imprimantes. Usage d'autre média causera le mal fonctionnement du photomaton et peut causer la mauvaise qualité des images et du dommage à l'imprimante. Usage d'autre média annulera votre garantie.
- La tête d'impression et les composants associés sont très délicats.
 - En touchant ces pièces, il est possible de causer le mal fonctionnement d'imprimante ou la perte des données.
 - Évitez de toucher la tête d'impression avec des objets métalliques comme les pinces à épiler ou les tournevis.
 - En touchant la tête d'impression et les composants associés, on peut déposer des saletés. Des saletés peuvent dégrader l'élément chauffant de la tête d'impression. Des dépôts de saletés peuvent accumuler des charges électriques et causer du dommage de charges statiques.
- Évitez des charges statiques ! En révisant la tête d'impression ou les planches de circuits imprimés, utilisez les mesures de mise en terre correctes.
- Si condensation se produit, n'allumez pas le photomaton. Sinon, vous pouvez endommager l'imprimante et/ou les électroniques.
- Assurez que le média ne retienne pas de poussière. N'opérez jamais les composantes du photomaton dans les endroits qui contiennent de la poussière et de la poudre métallique. Des contaminants affectent la qualité d'impression, l'opération d'appareil photo, la fiabilité de la carte de circuit, et l'opération du validateur de l'argent.
- N'extrairez jamais le média pendant que l'imprimante imprime. L'extrait du papier dans ce manieur peut endommager le média et la tête d'impression délicate.
- Suivez les directions de chargement précisément. Aussi, si les directions ne contiennent pas une opération en particulier, ne le faites pas. Autrement, vous pouvez bloquer ou endommager la tête d'impression, l'élément chauffant et les engrenages.



NOTICE



- This book uses the abbreviation “DBV” for “dollar bill validator.”
- This equipment has been tested. It complies with Class A device limits, pursuant to Part 15 of FCC rules. These limits provide reasonable protection against interference when operating the equipment in a commercial environment. To ensure Class A FCC limit compliance, use only shielded cables with this unit. This equipment generates, uses, and can radiate radio frequency energy. Install and use this equipment according to the instruction manual. Otherwise, this equipment may cause harmful interference to radio communications. However, these measures do not guarantee interference prevention in a particular installation.
- Operation of this equipment in a residential area is likely to cause harmful interference. At your own expense, you must correct interference. By turning this equipment off and on, you can determine if it interferes with radio or television reception. If it does, then the FCC encourages you to try to correct interference. Use one or more of following measures:
 - Reorient or relocate the receiving antenna.
 - Increase separation between the equipment and receiver.
 - Connect the equipment and receiver to different outlets or circuits.
 - Consult a dealer or experienced technician for help.
- Operation under Part 15 of the FCC Rules imposes further restrictions:
 - The photo booth must accept any interference received. Such received interference may cause undesired operation.
 - Modifications to this equipment could void your authority to operate it.
- Apple Industries Inc. continuously improves products and services. Specifications may change without notice.



Configuration

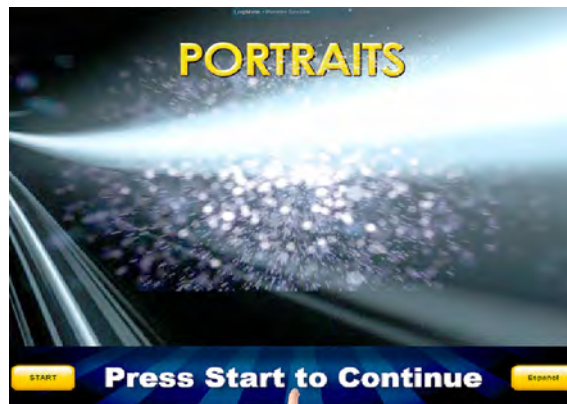
With Apple's innovative Smile 2.0 software, operators can quickly navigate through the onscreen guide to change the software configurations with the touch of a button. Smile 2.0 allows operators to:

- ◇ Store photographs on a USB Flash Drive.
- ◇ Capture customer email addresses for marketing purposes.
- ◇ Automated revenue reports.
- ◇ Change print and share prices.
- ◇ Customize available programs and functionality.
- ◇ Email meter reports.
- ◇ Manipulate software timing delays.
- ◇ And much more....

• **Entering the configuration and adjustment utility**

When you turn on your PhotoBooth for the first time, it will automatically load the feature mode of your PhotoBooth called "attract mode." ("Attract mode" is the only software mode accessible to PhotoBooth customers).

At any point while "attract mode" is playing, operators can quickly enter a secure Configuration and Adjustment Utility by simply tapping the six o'clock position repeatedly, displaying a keypad in the upper left hand corner of the screen.



Key Point: To enter configuration mode, simply tap the 6:00 position repeatedly. A keypad will appear in the upper left hand corner of the screen.



For security purposes, once the keypad has appeared, operators are prompted to input an access code to enter one of three different modes within configuration utility:



Configuration:

Allows full access to the configuration and adjustment utility.

** Default Access Code: 1-2-3-4-5, followed by "OK"*

Service Credits:


Allows a service technician to test the machine by granting service credits.

** Default Access Code: 1-4-4-1, followed by "OK"*

Current Meter Report:

Provides a current "soft" reading of the meter. Allows operators/technicians to print or email the report.

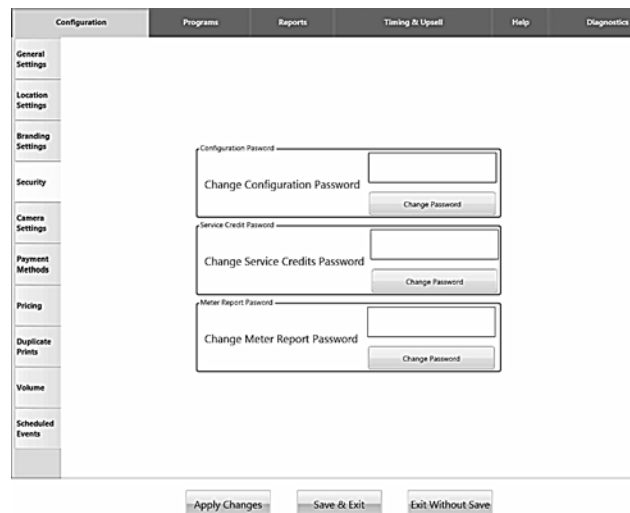
** Default Access Code: 5-4-3-2-1, followed by "OK"*




- All three access codes can be changed by the operator by entering the Configuration Utility and pressing "Security" as shown below.



Once the desired access code is entered and “OK” selected, operators will notice a brief delay (approximately 3-5 seconds) for the Configuration and Adjustment Utility to load. The screen will display the Windows desktop during this brief delay.



Key Point: Entering the Configuration and Adjustment Utility requires operators to enter an access code followed by the “OK” button.



- The operator should change the three access codes from the default codes for security purposes.

• *Navigating the Configuration and Adjustment Utility*

Navigating the Configuration Utility is designed to be user friendly, utilizing main-menu tabs across the top (Configuration, Programs, Reports, Timing and Upsell, Help) and sub-menu tabs down the left hand side (these change based on which menu item you have selected along the top menu). Operators can determine which menu is selected by examining the tabs highlighted in white. Unselected tabs remain in light blue.



Configuration Tab

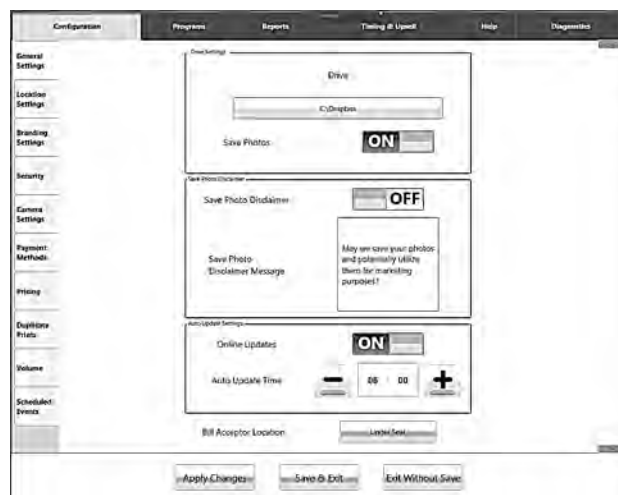
The following features can be configured by pressing the Configuration tab and selecting the appropriate sub-menu:

General Settings:

This sub-menu allows operators to customize photo strips and save pictures to a USB Flash Drive or within a folder on the hard drive itself.

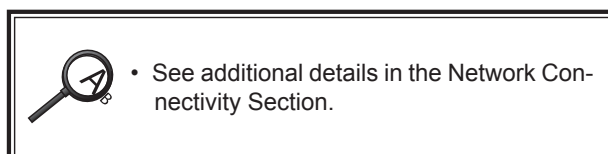
“Refer to the Logo Manual for details on using the custom logos.”

The General Settings sub-menu also allows operators to capture email addresses entered by the PhotoBooth user when using Share functionality. These email addresses will be saved in a file on the PhotoBooth and can be sent to the operator by pressing the Email Captured Emails button under the Online Alert Tab. (Note: This will send an email to the email address(es) entered in Email Reports To sub-menu under the Reports tab).



Key Point: Use your finger to toggle settings in the Configuration Utility ON and OFF

Key Point: Share functionality requires a working internet connection properly configured with your booth.





Location Settings:

Enter a Location Name (Note: the "Location Name" becomes the name of the folder on the USB Flash Drive, **DO NOT INCLUDE SPACES AT THE END OF LOCATION NAME**), Location Type, Operator Name, Location Split, and Machine Date/Time. This sub-menu can also be used by operators to configure the monetary split by operators/locations in generated reports. Additional information on meter reports can be found later on in this manual.

Security:

As referenced above, this sub-menu is used to configure access codes for your PhotoBooth.

Camera Settings:

Operators can configure the "zoom" of the camera using this function. Other options within this sub-menu are considered "advanced settings" for troubleshooting purposes and should not be configured unless directed by an Apple technician.

Payment Methods:

Toggles money acceptor and credit card reader on/off, controls pulse per currency unit.

Pricing:

Toggle Free Play on and off and adjust prices for additional prints and Share (Facebook, Twitter, Email) using this option.

Duplicate Prints:

Saves an additional print file with each photo saved to the USB Flash Drive. If enabled, the operator can press this button and re-print all photos within that print file.

Volume:

Controls the Theme volume (music) and Voice volume. Operators can also configure the Theme and Voice balance, although this is not recommended.

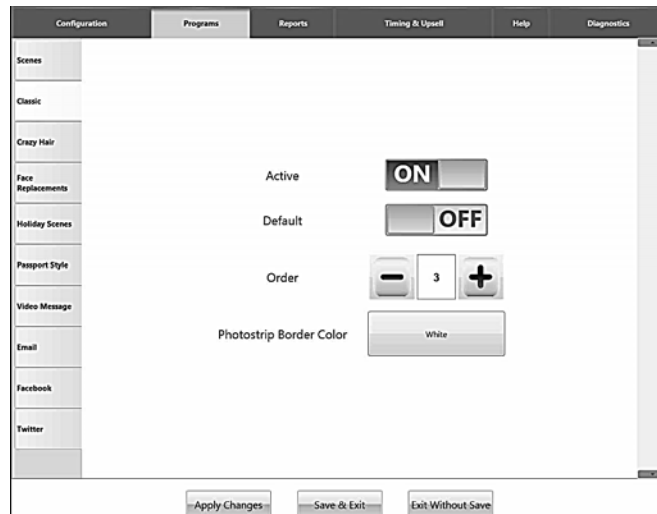
Programs Tab

The Programs Tab is used to activate or deactivate Smile 2.0 print/share customizations. Operators have the ability to add or remove options or rearrange the order in which customers can select the type of photo strip or 4 x 6 photographs.

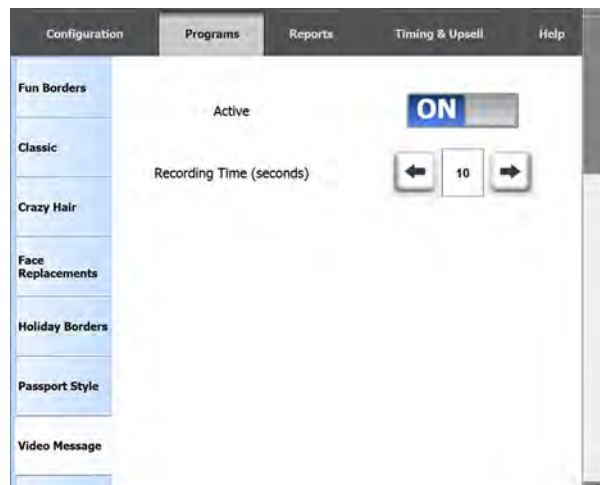


Sub-Menu Options:

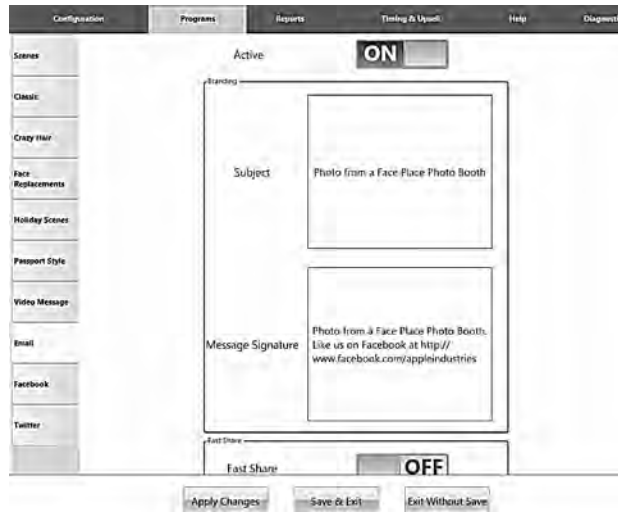
Fun Borders, Classic, Face Replacements, Holiday Borders, Passport Style, Post Cards, Video Message, Hair Styles, Email, Facebook, and Twitter.



Key Point: Print and Share options can be toggled ON and OFF and configured using the “Programs” menu.



Key Point: Recording times for “Video Messages” can be changed to a maximum of 60 seconds. (Note: Saving video messages to a USB Flash Drive requires the appropriate amount of disk space, which should be monitored by operators.



Key Point: Adding a custom “Message Signature” offers a great marketing tool to operators. Customers who “Email” prints will automatically receive the text in “Message Signature” at the bottom of the email they receive.

Facebook – Operators can toggle Facebook on/off from this sub-menu. Clients can also provide their Facebook usernames and passwords and press the “Store Credentials for Later” button. This will allow the operator to upload the photos to customers’ Facebook pages at a later time without security concerns.

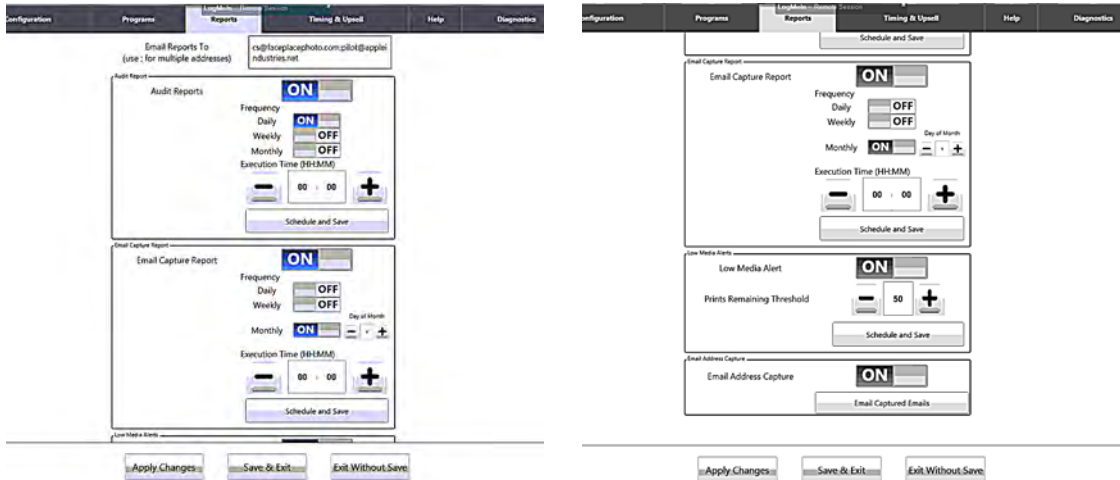


Key Point: Operators can also add custom “Message Signature” to Facebook. Customers who post prints to Facebook will automatically receive the text in “Message Signature” along with the print. Operators can also enable batch uploads to Facebook from this menu.



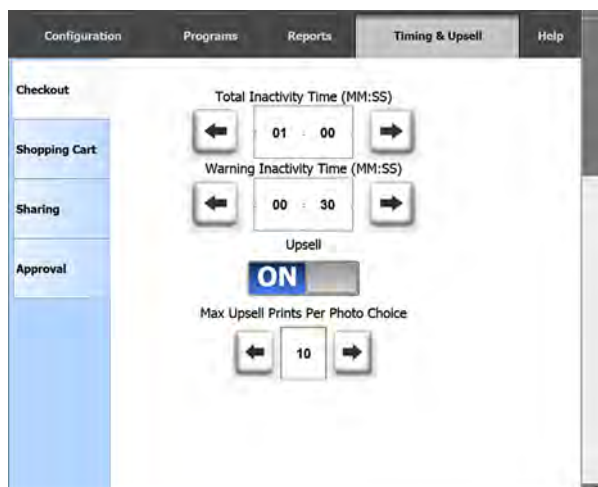
Reports Tab

This menu allows operators to automatically send usage reports to the email address of their choice. Operators can customize frequency and add additional recipients. For more advanced operators, an FTP server can be used and audit reports enabled.



Timing and Upsell Tab

Operators can configure inactivity warnings and timeout occurrences throughout “Attract Mode” of Smile 2.0 software. Different warning and timeout points can be configured for the Checkout, Shopping Cart, Sharing, Approval, Take Picture, and Select Product features within Smile 2.0. Operators can also toggle the Share functionality within the Checkout sub-menu of the Windows Tab.



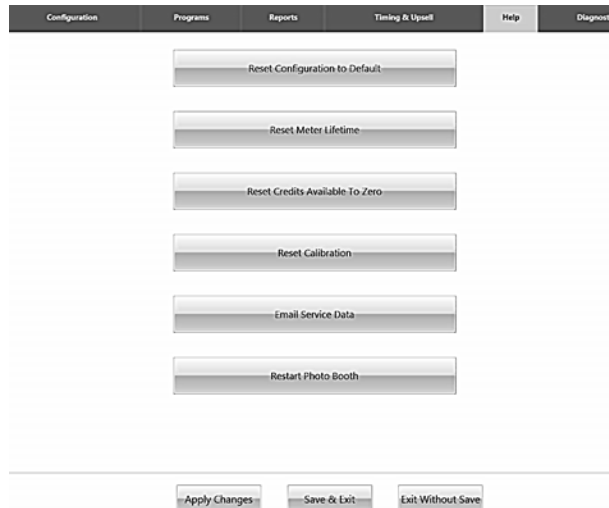
Key Point: To turn the Upsell feature off, operators should toggle it under the “Timing and Upsell Tab”, “Checkout” sub-menu.

Key Point: Operators can limit the maximum number of upsell prints allowed from this menu.



Help Tab

Operators can return to Default configurations and reset the soft meter report to zero from this menu (Note: Operators' current Access Codes will return to the Default Access Codes).



- **Configuration Safe Mode**

Operator will always be able to enter the Configuration Utility even if they have incorrectly configured something preventing the Application from starting up. This would allow for an Operator to enter the Configuration Utility and Reset Configuration to Default to get their Booth.

- **Meter reports**

We have added new features to make reading and interpreting the data in the Meter Reports much more simple. Collectors should now press the "Collect and Print" or "Collect without Print" Buttons while making a collection. This will automatically send a Meter Report to the designated email addresses during the collection (Note: Email addresses can be entered and modified under the Reports tab). Also, the full credit card reader serial number is now listed for easier setup with our partner credit card processing company, USA Technologies.



Meter Report:

System Summary

OPERATOR NAME:
OPERATOR PHONE:
LOCATION NAME: R&D
LOCATION TYPE: Bowling
REPORT #: 1
START DATE/TIME: 04/11/2012 15:07
END DATE/TIME: 04/12/2012 08:38
PHOTOBOOTH SOFTWARE: 3.0.12096.330
PRINTER ID NUMBER: D3722
CC READER SERIAL NUMBER: B00BD4A021909AA0
INITIAL PRINT REVENUE: \$6.00
UPSELL REVENUE: \$0.00
PAID PRINTS: 2
PAID SHARES: 0
FREEPLAY PRINTS: 0
FREEPLAY SHARES: 0
TOTAL ERRORS: 3
CURRENT PAPER REMAINING: 7
SERVICE CREDITS: 0

Revenue Summary

	CURRENT	LIFETIME
CASH EARNED:	\$0.00	\$0.00
CREDIT EARNED:	\$14.00	\$14.00
TOTAL EARNED:	\$14.00	\$14.00
LOCATION SPLIT:	\$0.00	
OPERATOR SPLIT:	\$14.00	

Daily Summary

START	END	QTY	MONEY IN	STOCK
04/11/2012 15:07	04/11/2012 15:17	1	\$11.00	8
04/11/2012 15:25	04/11/2012 23:59	0	\$0.00	8
04/12/2012 00:00	04/12/2012 08:38	1	\$3.00	7

[View Detailed Report](#)
[Send Email Report](#)
[Collect with Print](#)
[Collect without Print](#)
[Exit Meter Report](#)



4th Frame Logo, 4th Frame Coupon & 4x6 Watermarks

- **What are they?**

4th Frame Logo

The 4th Frame Logo (Figure 1) is an operator loaded logo that will be placed on the PhotoStrip in the 4th Frame. When enabled and a PhotoStrip is selected by the customer, 3 images will be captured instead of the usual 4 images. The 4th image will be replaced with the Logo. The 4th Frame Logo is not placed over any image which is why it should not have an alpha channel (transparency).



Figure 1

4th Frame Coupon (Promotion)

The 4th Frame Coupon is an operator loaded coupon that will be placed on the PhotoStrip in the 4th Frame of the 2nd PhotoStrip. The 4th Frame Coupon shares the same specifications as the 4th Frame Logo with the exception that it is only printed on a single strip. If you have both a 4th Frame Logo and a 4th Frame Coupon enabled, each strip will have a different 4th Frame, one with the Logo and one with the Coupon. The 4th Frame Coupon is not placed over any image which is why it should not have an alpha channel (transparency). When a user shares their photo, the PhotoStrip Coupon will not be on the shared image.

4x6 Watermarks

The 4x6 Watermark is an operator loaded watermark, which is overlaid on a 4x6 Photo. It is important the logo is kept small, since it is overlaid directly on top of the photo. If it is too big, it will interfere with the aesthetics of the photo. Depending on the orientation of the 4x6, the Portrait (Figure 2) or Landscape (Figure 3) Watermark will be used.



Figure 2



Figure 3



Logo/Coupon & Watermark Image Requirements

The image requirements are as follows for setting up 4th Frame Logos/
Coupon and 4x6 Watermarks:

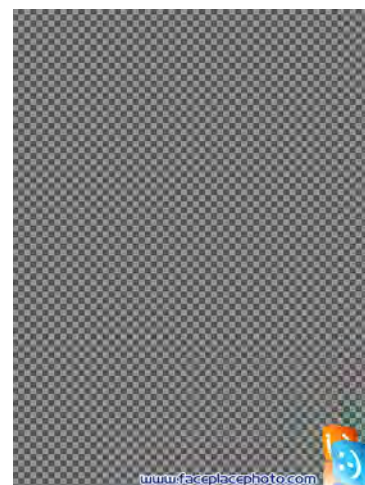
	4 th Frame Logo	4 th Frame Coupon	4x6 Landscape Watermark	4x6 Portrait Watermark
File Type	PNG	PNG	PNG	PNG
Color	RGB	RGB	RGB	RGB
Transparency Layer	N/A	N/A	1	1
Bits per Channel	8	8	8	8
Total Channels	3(RGB)	3(RGB)	4(RGB+Alpha)	4(RGB+Alpha)
Total Bits	24	24	32	32
Resolution	1500 X 1000	1500 X 1000	1500 X 1000	1000 X 1500
Filename	photostrip.png	photostrip_coupon.png	landscape.png	portrait.png
Filename 2	photostrip2.png	photostrip_coupon2.png	N/A	N/A
Filename 3	photostrip3.png	photostrip_coupon3.png	N/A	N/A
Filename 4	photostrip4.png	photostrip_coupon4.png	N/A	N/A



4th Frame



4x6 Landscape Watermark



4x6 Portrait Watermark



4th Frame Logo/Coupon & 4x6 Watermark Creation

To create and/or modify a 4th Frame Logo/Coupon and/or 4x6 Watermark you will need to use a Photo Editing Software on a computer other than the PhotoBooth to create the necessary image files that meet the image requirements listed above.

Microsoft Windows comes with a built in Photo Editor, Microsoft Paint, which can be used for simple logos. PaintBrush, a free basic Photo Editor for a Mac based computer can be downloaded at <http://paintbrush.sourceforge.net>.

For best results when creating complicated Logos and Watermarks on both Windows and Mac, a professional photo editing tool should be used, such as Adobe Photoshop (<http://www.adobe.com/products/photoshopfamily.html>) or GIMP (<http://www.gimp.org>).

Enabling/Disabling 4th Frame Logo/Coupon & 4x6 Watermark

1. Access Configuration Mode.
2. Touch **Configuration**.
3. Touch **Branding Settings**.
4. Use the ON/OFF Sliders to select the Options for the 4th Frame Logo, 4th Frame Coupons & 4x6 Watermarks. (Figure 4)



Figure 4

We also give the ability for an operator to load up to 4 Photostrip Logos and 4 Photostrip Coupons (See Filename 2, Filename 3, & Filename 4 specifications above) that can be used in one of the following options:

Off – Turned Off

Single – A Single Logo is used

Cycle – The application cycles through the enabled logos in order during each usage.


Random – The application cycles through each enabled logo randomly during each usage.

5. Touch **Save and Exit** to Save Configuration Changes.



Loading 4th Frame Logo, 4th Frame Coupon & 4x6 Watermark to Booth

1. Copy Logo, Coupon & Watermark Files to the USB Flash Drive (not in a folder).
2. Access Configuration Mode
3. Insert USB Flash Drive into PhotoBooth Computer USB Port and wait 15 seconds
4. Exit Configuration Mode
5. During the Program Startup Process, the application will load any found files and overwrite any that are currently on the PhotoBooth.
6. Remove USB Flash Drive if not using to save images after PhotoBooth Application has started.




- Previous Logos/Coupon/Watermarks will be overwritten with any found on the USB Flash Drive during the startup process.
- If the files are not named correctly or are in a folder on the USB Flash Drive then they will not load properly.

• Theme Song

The Theme Song can be changed in the same manner as the Logos/ Coupon/Watermarks. Any MP3 that is to be used should be named, "Theme Song.mp3" (No Quotes), and placed on the USB Flash Drive. You can load the Logos/Coupon/Watermarks either together or separately with the MP3 but the same process is followed.

1. Copy Theme Song to the USB Flash Drive (not in a folder).
2. Access Configuration Mode
3. Insert USB Flash Drive into PhotoBooth Computer USB Port and wait 15 seconds
4. Exit Configuration Mode
5. During the Program Startup Process, the application will load any found files and overwrite any that are currently on the PhotoBooth.
6. Remove USB Flash Drive if not using to save images after PhotoBooth Application has started.



- Previous Theme Song will be overwritten with any found on the USB Flash Drive during the startup process.
- If the files are not named correctly or are in a folder on the USB Flash Drive then they will not load properly.



Custom Fun Borders Setup

- **What Are They?**

Fun Borders are Picture Frames that are displayed when a customer selects the Fun Border Program within the Smile 2.0 Software. An example of an outputted 4x6 Fun Border is below:



Custom Fun Borders can be created to give your Photo Booths a personal feeling for your locations. Custom Borders should be created in sets of 4 as a Photo Strip requires 4 Borders to be selected and are typically put together into themed Strips. A single border can be used more than once in a Strip but this may not be ideal for your customers.

- **Fun Borders Image Requirements**

The image requirements are as follows for custom Fun Borders:

	Border
File Type	PNG
Color	RGB
Transparency Layer	1
Bits Per Channel	8
Total Channels	4(RGB+Alpha)
Total Bits	32
Resolution	1500 X 1000



- ***Fun Border Creation***



To create and/or modify a Fun Border you will need to use a Photo Editing Software on a computer other than the PhotoBooth to create the necessary image files that meet the image requirements listed above. The Transparent Area of the image will be where the user will be placed within the Fun Border.

Microsoft Windows comes with a built in Photo Editor, Microsoft Paint, which can be used for simple logos. PaintBrush, a free basic Photo Editor for a Mac based computer can be downloaded at <http://paintbrush.sourceforge.net>.

For best results when creating complicated Logos and Watermarks on both Windows and Mac, a professional photo editing tool should be used, such as Adobe Photoshop (<http://www.adobe.com/products/photoshopfamily.html>) or GIMP (<http://www.gimp.org>).



• Loading Custom Borders

1. Copy Custom Borders PNG files onto a USB Flash Drive to Load into Photo Booth.
2. Connect a USB Keyboard & USB Mouse to the Front USB Ports of the Photo Booth CPU.
3. Connect USB Flash Drive with Custom Borders into Front USB Port of the Photo Booth CPU.
4. At any point while "Attract Mode" is playing, tap the six o'clock position on the monitor.
5. Hit the **ESC** or **ALT + F4** Key on the Keyboard to close the Photo Booth Application.
6. Open **Windows Explorer** by Selecting **Start->My Computer**.
7. Double Click **E** Drive to Explore USB Flash Drive.
8. Copy all Custom Borders PNG files to C:\PHOTOBOOTH\Images\Borders\
9. Open **Notepad** by Selecting **Start->All Programs->Accessories->Notepad**.
10. Open Border Configuration File by choosing **File->Open** and opening

```

borders.xml - Notepad
File Edit Format View Help
<combinableImageFiles>
<Directory>borders</Directory>
<OverlayImageGroups>
<OverlayImageGroup>
<OverlayImages>
<OverlayImage Foreground="Animals_Strip_01_FG.png" Background="Animals_Strip_01_BG.png" SampleImage="Animals_Strip_01_EX.png" />
<OverlayImage Foreground="Animals_Strip_02_FG.png" Background="Animals_Strip_02_BG.png" SampleImage="Animals_Strip_02_EX.png" />
<OverlayImage Foreground="Animals_Strip_03_FG.png" Background="Animals_Strip_03_BG.png" SampleImage="Animals_Strip_03_EX.png" />
<OverlayImage Foreground="Animals_Strip_04_FG.png" Background="Animals_Strip_04_BG.png" SampleImage="Animals_Strip_04_EX.png" />
</OverlayImages>
</OverlayImageGroup>
<OverlayImageGroup>
<OverlayImages>
<OverlayImage Foreground="Bug_Strip_01_FG.png" Background="Bug_Strip_01_BG.png" SampleImage="Bug_Strip_01_EX.png" />
<OverlayImage Foreground="Bug_Strip_02_FG.png" Background="Bug_Strip_02_BG.png" SampleImage="Bug_Strip_02_EX.png" />
<OverlayImage Foreground="Bug_Strip_03_FG.png" Background="Bug_Strip_03_BG.png" SampleImage="Bug_Strip_03_EX.png" />
<OverlayImage Foreground="Bug_Strip_04_FG.png" Background="Bug_Strip_04_BG.png" SampleImage="Bug_Strip_04_EX.png" />
</OverlayImages>
</OverlayImageGroup>
<OverlayImageGroup>
<OverlayImages>
<OverlayImage Foreground="Coral_Strip_01_FG.png" Background="Coral_Strip_01_BG.png" SampleImage="Coral_Strip_01_EX.png" />
<OverlayImage Foreground="Coral_Strip_02_FG.png" Background="Coral_Strip_02_BG.png" SampleImage="Coral_Strip_02_EX.png" />
<OverlayImage Foreground="Coral_Strip_03_FG.png" Background="Coral_Strip_03_BG.png" SampleImage="Coral_Strip_03_EX.png" />
<OverlayImage Foreground="Coral_Strip_04_FG.png" Background="Coral_Strip_04_BG.png" SampleImage="Coral_Strip_04_EX.png" />
</OverlayImages>
</OverlayImageGroup>
<OverlayImageGroup>
<OverlayImages>
<OverlayImage Foreground="Dino_Strip_01_FG.png" Background="Dino_Strip_01_BG.png" SampleImage="Dino_Strip_01_EX.png" />
<OverlayImage Foreground="Dino_Strip_02_FG.png" Background="Dino_Strip_02_BG.png" SampleImage="Dino_Strip_02_EX.png" />
<OverlayImage Foreground="Dino_Strip_03_FG.png" Background="Dino_Strip_03_BG.png" SampleImage="Dino_Strip_03_EX.png" />
<OverlayImage Foreground="Dino_Strip_04_FG.png" Background="Dino_Strip_04_BG.png" SampleImage="Dino_Strip_04_EX.png" />
</OverlayImages>
</OverlayImageGroup>
<OverlayImageGroup>
<OverlayImages>
<OverlayImage Foreground="Hearts_Strip_01_FG.png" Background="Hearts_Strip_01_BG.png" SampleImage="Hearts_Strip_01_EX.png" />
<OverlayImage Foreground="Hearts_Strip_02_FG.png" Background="Hearts_Strip_02_BG.png" SampleImage="Hearts_Strip_02_EX.png" />
<OverlayImage Foreground="Hearts_Strip_03_FG.png" Background="Hearts_Strip_03_BG.png" SampleImage="Hearts_Strip_03_EX.png" />
<OverlayImage Foreground="Hearts_Strip_04_FG.png" Background="Hearts_Strip_04_BG.png" SampleImage="Hearts_Strip_04_EX.png" />
</OverlayImages>
</OverlayImageGroup>

```



The Border Configuration File is where you setup the various Photo Strips by putting the filenames of the scenes for each strip. The configuration file is an XML file, you can learn more about XML file basics, here:

http://www.w3schools.com/xml/xml_syntax.asp.

Each set must be configured in groups of 4 images, within an <OverlayImageGroup> tag. The OverlayImages are then set within a nested <OverlayImages> tag. Then each image within the set is spelled out within a <OverlayImage> tag where the details for the image are spelled out.

Example Photo Strip Setup

```
<OverlayImageGroup>
  <OverlayImages>
    <OverlayImage Foreground="Playingcards01.png"/>
    <OverlayImage Foreground="Playingcards02.png"/>
    <OverlayImage Foreground="Playingcards03.png"/>
    <OverlayImage Foreground="Playingcards04.png"/>
  </OverlayImages>
</OverlayImageGroup>
```

The Photo Strips will be displayed within our Application in the order the groups of strips are ordered from top to bottom. If you would like your strips to be displayed first, they should be put towards the top of the .XML file

NOTE: The first few lines MUST not be removed:

```
<CombinableImageFiles>
<Directory>borders</Directory>
<OverlayImageGroups>
```

NOTE: The last few lines MUST not be removed:

```
</OverlayImageGroups>
</CombinableImageFiles
```

NOTE: If the proper formatting of this file is not maintained and filenames point to files not located on the Photo Booth, the Photo Booth Application will not start up properly until you fix any issues within this file or restore your Photo Booth using a Restore Disk.

Save the file after you have made your modifications. Disconnect the Keyboard, Mouse & USB Flash Drive. Restart the Photo Booth.



Attract Mode Configuration Tool

● ***Introduction***

The Smile 2.0 Photo Booth Attract Mode Configuration Tool is a tool that has been developed by Apple Industries to allow Operators to quickly and easily switch between the Standard Face Place Attract Video and custom image slideshow.

Required Hardware:

- ◇ USB Flash Drive
- ◇ USB Keyboard
- ◇ USB Mouse

● ***Downloading Installation File***

In the near future this will be included on the Recovery DVD as a standard option, but at this time it requires the installation of the tool.

Please download the correct file from our Face Place Website by visiting one of the following links and saving the file onto a USB Flash Drive.

Inside Booth:

http://www.faceplacephoto.com/downloads/Smile2.0_Inside_Attract_Mode_Tool.msi

Pix Place Booth:

http://www.faceplacephoto.com/downloads/Smile2.0_Outside_Attract_Mode_Tool.msi

● ***Install Attract Mode Tool on Smile 2.0 Photo Booth***

1. Shut Down Photo Booth.
2. Connect the Keyboard & Mouse to Photo Booth CPU.
3. Connect USB Flash Drive to Photo Booth CPU.
4. Power on the Photo Booth and Allow Photo Booth to fully Startup.
5. Close the Photo Booth Application by clicking the Message Area and hitting ALT+F4 on a Keyboard.
6. Open **Windows Explorer** by Selecting **Start->My Computer**.
7. Double Click **E Drive** to Explore USB Flash Drive.
8. Double Click the Installation File you downloaded to run Installer.
9. The Installer will automatically install and close itself very quickly. The Attract Mode Tool is now installed.



● **Preparing Images for Slideshow**

The image requirements are as follows for images that will be used in the Attract Mode Slideshow:

	Attract Mode Image
File Type	PNG or JPG
Transparency Layer	N/A
Resolution (Inside)*	1280 x 864
Resolution (Outside)*	1080 x 1695

*The resolutions above ensure that the images are displayed full screen. Smaller sizes can be used, but they will be displayed with a black border around the image or off the screen if they are larger than the allowed resolutions.

● **Ordering Images for Slideshow**

The images will be displayed in filename order in the slideshow. (If you want the images to display in a particular order, ensure the filenames utilize numbers such as 0001_, 0002, etc...).

For example, if I had 3 images that I wanted to display in order, I could utilize the following naming scheme to ensure they are displayed as intended:

```
0001_Introduction.png
0002_Family.png
0003_Bye.png
```

● **Adding Slideshow Images onto USB Flash Drive**

On the USB Flash Drive create a New Folder and name it **Attract_Images**. Copy all images that will be used for the Attract Mode Slideshow into the folder named **Attract_Images**. (E.g. E:\Attract_Images\).



• **Enabling Image Slideshow**

1. Shut Down Photo Booth.
2. Connect the Keyboard & Mouse to Photo Booth CPU.
3. Connect USB Flash Drive, (with pre-loaded images), into the Photo Booth CPU.

NOTE: It is important that if you have any other USB Flash Drives connected to the Photo Booth CPU that they be removed at this time. You should only have a single USB Flash Drive connected to the Photo Booth CPU at one time to ensure that Drive Letter Assignments do not get altered.

4. Power on the Photo Booth and Allow Photo Booth to fully Startup.
5. Close the Photo Booth Application by clicking the Message Area and hitting ALT+F4 on a Keyboard.
6. Select **Tools** Folder on Desktop.
7. Double Click **Photo Booth Attract Mode Configuration**. (Shortcut to Launch Face Place Photo Booth Attract Mode Configuration Tool).



(*Note: If you did not save the images to E:\Attract_Images\, you will need to select **Browse** and select the folder where your images are saved).

8. Select **Enable Image Slideshow** and follow all prompts to enable the Image Slideshow.
9. Once you receive the confirmation window that the Image Slideshow has been loaded select **OK**. (The Attract Mode Configuration Tool will close).



10. Remove USB Flash Drive.
11. Restart the Photo Booth Application by Double Clicking the Logo on the Desktop or by restarting the Photo Booth.
12. You should now see the Image Slideshow in the Attract Mode.

● **Enabling Default Video Attract Mode**

1. Shut Down Photo Booth.
2. Connect a Keyboard & Mouse to Photo Booth CPU.
3. Power on the Photo Booth and Allow Photo Booth to fully Startup.
4. Close the Photo Booth Application by clicking the Message Area and hitting ALT+F4 on a Keyboard.
5. Select **Tools Folder** on Desktop.
6. Double Click **Photo Booth Attract Mode Configuration**. (Shortcut to Launch Face Place Photo Booth Attract Mode Configuration Tool).



7. Select **Enable Default Video** and follow all prompts to enable the Image Slideshow.
8. Once you receive the confirmation window that the Video has been loaded select **OK**. (The Attract Mode Configuration Tool will close).
9. Restart the Photo Booth Application by Double Clicking the Logo on the Desktop or by restarting the Photo Booth.
10. You should now see the Default Video in the Attract Mode.



Meter Reports

- **What is it?**

The Meter Report (also called Collections Report) is a powerful tool. It keeps track of statistics such as:

- ◇ Number of prints purchased.
- ◇ How many times photos and videos are shared.
- ◇ How much cash and credit your booth has made since the last report.
- ◇ Which styles and themes customers choose.
- ◇ Amount of paper remaining in the printer.

The image below is an example of what the Meter Report looks like on the Smile 2.0 Photo Booth monitor.

Meter Report:

System Summary

MACHINE ID:	Example Report
REPORT #:	5
START DATE/TIME:	11/29/2011 14:32
END DATE/TIME:	12/07/2011 09:36
PHOTOBOOTH SOFTWARE:	3.0.11340.190
PRINTER ID NUMBER:	D3722
FREEPLAY PRINTS:	0
FREEPLAY SHARES:	0
PAID PRINTS:	58
PAID SHARES:	4
TOTAL ERRORS:	0
CURRENT PAPER REMAINING:	316
SERVICE CREDITS:	10

Revenue Summary

	CURRENT	LIFETIME
INITIAL PRINT REVENUE:	\$129.00	\$264.00
UPSELL REVENUE:	\$49.00	\$100.00
CASH EARNED:	\$104.00	\$235.00
CREDIT EARNED:	\$189.00	\$371.00
TOTAL EARNED:	\$293.00	\$606.00
LOCATION SPLIT (30%):	\$87.90	\$161.80
OPERATOR SPLIT (70%):	\$205.10	\$424.20

Daily Summary

START	END	QTY	MONEY IN	STOCK
11/29/2011 14:32	11/29/2011 23:59	0	\$0.00	374
11/30/2011 00:00	11/30/2011 23:59	1	\$5.00	373
12/01/2011 00:00	12/01/2011 23:59	0	\$0.00	373
12/02/2011 00:00	12/02/2011 23:59	14	\$70.00	359
12/03/2011 00:00	12/03/2011 23:59	27	\$128.00	335
12/04/2011 00:00	12/04/2011 23:59	12	\$50.00	324
12/05/2011 00:00	12/05/2011 08:42	3	\$15.00	321
12/05/2011 08:48	12/05/2011 23:59	3	\$15.00	318
12/06/2011 00:00	12/06/2011 23:59	2	\$10.00	316
12/07/2011 00:00	12/07/2011 09:36	0	\$0.00	316



● **How do I view it?**

In order to access the Meter Report, the application needs to be on the Attraction Screen. This is when the video is playing and the START button is visible. Once on the Attraction Screen, touch the middle section of the bottom of the screen, where the text is cycling, 5 times and keypad will pop-up on the screen. The default password for the Meter Report is **54321**. We recommend changing it to a more secure password. See Configuration section to check how to change it. Once you enter your password, the desktop will become visible and the Meter Report will be shown in a moment.

● **How do I interpret it?**

When determining how much money should be in the Cash Box and your Credit Card Account, you will need to look at the CURRENT values of CASH EARNED and CREDIT EARNED:

OFFICE REVENUE:	\$49.00	\$100.00
CASH EARNED:	\$104.00	\$235.00
CREDIT EARNED:	\$189.00	\$371.00
TOTAL EARNED:	\$293.00	\$606.00
LOCATION TOTAL (2011):	\$87.00	\$181.00

● **Description**

System Summary

Operator Name

Name of the operator. See Configuration section to check how to edit it.

Operator Phone

Phone number for the operator. See Configuration section to check how to edit it.

Location Name

Name of the location. See Configuration section to check how to edit it.

Location Type

Type of Location. See Configuration section to check how to edit it.

Report #

Will increase each time report is RESET.

Date/Time

Start / End times of the current report number.

Photobooth Software

Current version of Smile 2.0 application.

Printer ID Number

Unique ID number of printer. This number may be needed for servicing your printer.

Freeplay Prints

Number of photos printed while booth is on FreePlay during the Start/End time of the report.



Freeplay Shares

Number of times a photo or video is shared via email, Facebook, or Twitter while booth is on FreePlay during the Start/End time of the report.

Paid Prints

Number of photos purchased during the Start/End time of the report.

Paid Shares

Number of times a purchased photo or video is shared via email, Facebook, or Twitter during the Start/End time of the report.

Total Errors

Number of errors that have occurred during the Start/End time of the report.

Current Paper Remainig

Number of prints allowed based on available paper in the printer.

Service Credits

Number of credits used for testing while booth is not on FreePlay. To access Service Credits menu, pull up the number pad in Attract mode and enter the appropriate password. The default password is **1441**.

Revenue Summary

Initial Print Revenue

Total money used to purchase the primary photo. This does not include any Upsell purchases.

Upsell Revenue

Total money used to purchase any additional prints or shares during Upsell.

Cash Earned

Total cash entered into the Dollar Bill Validator during the Start/End time of the report.

Credit Earned

Total money swiped in the Credit Card Reader.

Total Earned

Sum of Cash Earned and Credit Earned. Total amount of money earned during the Start/End time of the report.

Location Split (%)

Amount of money owed to the location based on the percent entered and Total Earned. See **Configuration Guide** to check how to change the percentage. This provides a quick calculation for the current report.

Operator Split (%)

Amount of money the operator keeps based on the percent entered and Total Earned. This percentage is not set in Configuration Mode but is calculated by subtracting the Location Split Percentage from 100%.



Daily Summary

Start/End

Provides a detailed statistics in a specific time range when the booth is powered on. It creates a new range each day at midnight as well as if the machine is powered down for than 5 minutes. This lets the operator know if the booth was shut down and for how long. It also provides analysis on how busy the booth is on a particular day.

Qty

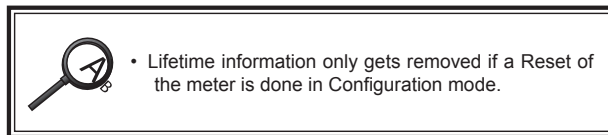
Quantity – Provides the number of prints and shares for the time range.

Money In

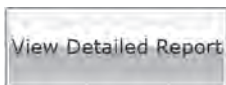
Provides total cash and credit used during the time range.

Stock

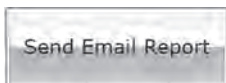
Provides amount of paper remaining at the END time of the time range.



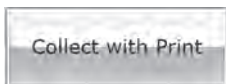
Button Controls



Touch to access Detailed Report screen. This has no effect on the current report.



Touch to email current report to email address(es) entered in Configuration. See **Configuration Guide** to check how to add or edit addresses. This has no effect on the current report.

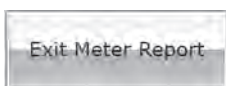


Touch to print current report on 4x6 paper. This will reset all current report statistics and increase the Report # by 1.

**Note: The printed report may require more than one 4x6 paper, depending on the number of sessions in the Daily Summary.*



Touch to exit the Meter Report and reset all current report statistics and increase the Report # by 1. Once the Meter Report is exited, Attract Mode will play automatically.



Touch to exit the Meter Report and save all current report statistics. This button should be used when just evaluating the statistics without performing a collection. Once the Meter Report is exited, Attract mode will play automatically.



● **Detailed Report**

The Detailed Report displays the System Summary, as found in the Meter Report, along with an in depth analysis of each photo taken. This tool allows the operator to see which products are being utilized. The image below is an example of what the Detailed Report looks like on the Smile 2.0 Photo Booth monitor.

Detailed Report:

System Summary

MACHINE ID:	Example Report
REPORT #:	5
START DATE/TIME:	11/29/2011 14:32
END DATE/TIME:	12/07/2011 15:29
PHOTOBOOTH SOFTWARE:	3.0.11340.190
PRINTER ID NUMBER:	D3722
FREEPLAY PRINTS:	0
FREEPLAY SHARES:	0
PAID PRINTS:	58
PAID SHARES:	4
TOTAL ERRORS:	0
CURRENT PAPER REMAINING:	2
SERVICE CREDITS:	10

PRICING

PRODUCT TYPE	PRICE	QUANTITY	MONEY IN
Classic Color PHOTOSTRIP PRINT	\$3.00	25	\$75.00
Classic Color 4X6 EMAIL	\$1.00	1	\$1.00
Holiday Borders 4X6 PRINT	\$3.00	1	\$3.00
Holiday Borders PHOTOSTRIP PRINT	\$3.00	2	\$6.00
Holiday Borders 4X6 FACEBOOK	\$1.00	1	\$1.00
Holiday Borders PHOTOSTRIP EMAIL	\$1.00	1	\$1.00
Classic B&W 4X6 PRINT	\$3.00	1	\$3.00
Classic B&W PHOTOSTRIP PRINT	\$3.00	29	\$87.00
Classic B&W 4X6 EMAIL	\$1.00	1	\$1.00

Lifetime

PRODUCT TYPE	QUANTITY
Classic Color 4X6 PRINT	2
Classic Color PHOTOSTRIP PRINT	43
Classic Color 4X6 EMAIL	2
Classic Color 4X6 FACEBOOK	1
Classic Color 4X6 TWITTER	1
Fun Borders 4X6 PRINT	2
Fun Borders PHOTOSTRIP PRINT	3
Holiday Borders PHOTOSTRIP PRINT	12
Face Replacements 4X6 PRINT	1
Face Replacements PHOTOSTRIP PRINT	2
Wigs PHOTOSTRIP PRINT	1
Classic B&W 4X6 PRINT	5
Classic B&W PHOTOSTRIP PRINT	45
Classic Sepia 4X6 PRINT	1
Classic Sepia PHOTOSTRIP PRINT	1
Holiday Borders 4X6 PRINT	1
Holiday Borders 4X6 FACEBOOK	1
Holiday Borders PHOTOSTRIP EMAIL	1
Classic B&W 4X6 EMAIL	1

Back to Meter Report



Pricing

Product Type

Lists the type of photo by describing the Program used, if it was a Photo-strip or 4x6, and how it was vended (whether it was printed or shared via email, Facebook or Twitter).

Price

Cost of the product.

Quantity

Number of times the specific product was purchased during the time of the report.

Money In

Amount of money the specific product made during the time of the report.


Lifetime

Product Type

Lists the type of photo by describing the Program used, if it was a Photo-strip or 4x6, and how it was vended.

Quantity

Number of times the specific product was purchased during the lifetime of the booth.

	<ul style="list-style-type: none">• Lifetime information only gets removed if a Reset of the meter is done in Configuration mode.
---	---



Network Connectivity

Your PhotoBooth comes pre-installed with a CradlePoint CTR35 Router which makes it easy to get your PhotoBooth Internet Access using 1 of 3 different choices. To configure you're CTR35, you must connect a keyboard and mouse to the computer of your photo booth (Note: Both of these devices must be disconnected after configuring the router to use the PhotoBooth).

Important: Please follow these instructions step-by-step. If you are using a 4G/3G Wireless Broadband mode, please ensure it is listed as a Cradlepoint-supported device by visiting <http://www.cradlepoint.com/products/mobile-broadband-routers/ctr35-wireless-n-portable-router>.

Wireless or Wired Internet Access

- ◇ Enables internet access through 4G/3G wireless broadband networks, existing WiFi, or Ethernet-based data services (Cable / DSL / Satellite)
- ◇ Supports most wireless data modems from the leading carriers (modem and service sold separately)
- ◇ Special Feature: Use WiFi as a Data Source.

• What are the Choices

1. **Wired** – A Wired Internet Connection requires an Ethernet Cable with Internet Access at the location to be run into the PhotoBooth and connected directly to the PhotoBooth computer. A Wired Internet Connection will be the most reliable of the three connection options and will be the easiest to install and configure.
2. **WiFi as WAN** - A WiFi Network available at the location can be used to provide Internet Access to the PhotoBooth. The reliability of this connection will depend on a number of factors including the Signal Strength of the WiFi Network.
3. **4G/3G Wireless Broadband** – A 4G/3G Wireless Broadband USB Modem (Air Card) can be used to provide Internet Access to the PhotoBooth. The reliability of this connection will depend on a number of factors including the Signal Strength of the Broadband Service chosen. To find a listing of all available 4G/3G Modems please visit the following site: <http://www.cradlepoint.com/compatibility>.



● ***Are you using a wired connection?***

1. If you have chosen to go with a Wired Connection, you will need to bring an Internet Accessible Ethernet Cable into the PhotoBooth using one of the Pass-Through Holes on the Cabinet. (On some cabinets it may be necessary to drill a Pass-Through Hole if one is not available).
2. You will need to disconnect the Ethernet Cable that comes pre-installed between the CradlePoint CTR35 and the PhotoBooth computer from the computer.
3. Connect the Internet Accessible Ethernet Cable that you have at the location into the PhotoBooth computer.
4. Your PhotoBooth should now have Internet Access.

● ***Are you using WIFI as WAN or a 4G/3G Wireless Broad-band Connection?***

If you have chosen WiFi as WAN or 4G/3G Wireless Broadband Connection you will need to configure the CradlePoint CTR35. Before getting started, if you are using WiFi as WAN, please ensure that you have the WiFi SSID and Password for the WiFi Network you will be connecting to. If you will be using a 4G/3G Wireless Broadband Modem, install the Modem into the USB Port of the CradlePoint CTR35 before continuing.

Step 1: Accesing the web browser.

To access the CradlePoint CTR35 Administration Page you will need to do the following:

1. Connect a USB Keyboard & USB Mouse to the Front USB Ports of the PhotoBooth computer.
2. At any point while "attract mode" is playing, tap the six o'clock position on the monitor.
3. Hit the **ESC** Key on the Keyboard to close the PhotoBooth Application.
4. Click the Start Menu->Programs->Internet Explorer to launch Internet Explorer.

Step 2: Using the first time setup wizard

If this is the First Time you are connecting to the CradlePoint, the First Time Setup Wizard will help you customize the name of your wireless network, change passwords to something you choose, and establish an optimal WiFi security mode. The CTR35 comes with a unique password creating built-in WiFi Security, which prevents unauthorized users from connecting to your WiFi network.



1. In the Internet Explorer address bar type "cp" or "192.168.0.1" (without quotation). Press ENTER/RETURN.
2. When prompted for your password, type the eight character Default Password found on product label.
3. When you log-in for the first time, you will be automatically directed to the FIRST TIME SETUP WIZARD.

STEP A

If you choose, you can change the router's ADMINISTRATOR PASSWORD. Then, select your TIME ZONE. Click NEXT.

STEP B

CradlePoint recommends you customize your WiFi Network Name. Type in your Personalized Wireless Network Name here.

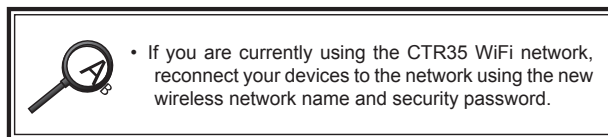
Choose the WIFI SECURITY MODE that best fits your needs: POOR for WEP, GOOD for WPA/WPA2 and BEST for WPA2 Only. (Make sure your PC or other devices support the mode you choose). Choose a personalized WIRELESS SECURITY PASSWORD. This password will be used to reconnect your devices to the router once the security settings have been saved. Click NEXT.

STEP C

If necessary, select your 4G WiMAX Realm. If you have a 3G or LTE modem, no Selection is necessary. Click NEXT.

STEP D

Review the details and record your wireless network name, administrative and wireless password. Clicks APPLY to save the settings to your router.



Step 3: Modem support & updates

CradlePoint regularly makes new modem support and performance enhancements available in a software package called "firmware". Updating firmware ensures your CradlePoint CTR35 will run reliably and have the latest 3G/4G Broadband Network Modem Support as new modems are released.

To update your firmware, follow the steps below.

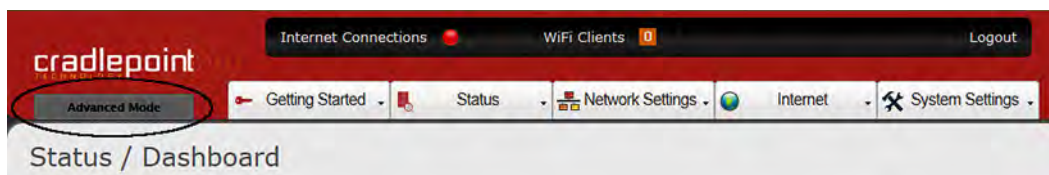
1. In the Internet Explorer address bar type "cp" or "192.168.0.1" (without quotation). Press ENTER/RETURN.
2. Enter your password to login. Your unique password is either the administrator password you set earlier or the default password found on the bottom label of the CTR35.
3. Select SYSTEM SETTINGS on the top navigation bar, then SYSTEM SOFTWARE in the drop down menu.



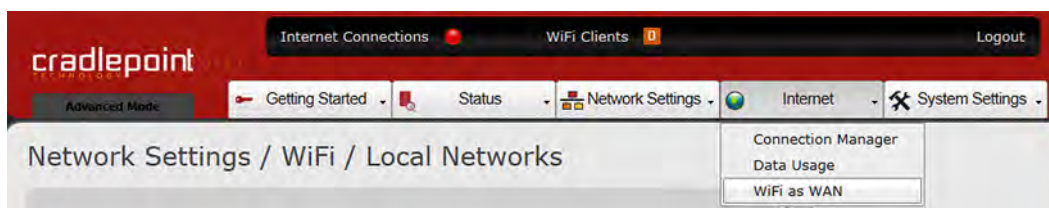
4. Find the FIRMWARE UPGRADE section. This will display the current firmware version that is installed and indicate if updated firmware is available.
5. Click AUTOMATIC (Internet) if new firmware is available. The router will download and install the firmware and automatically reboot itself. A status monitor will appear and indicate when this process is complete. This process may take several minutes depending on your internet connection speed.
6. If your router does not have an active internet connection (ie: modem not working on older firmware) you will need to download the latest firmware from <http://www.cradlepoint.com/firmware/ctr35> to your desktop, and then use the MANUAL FIRMWARE UPLOAD option.

Step 4-1: If you are using WIFI as WAN

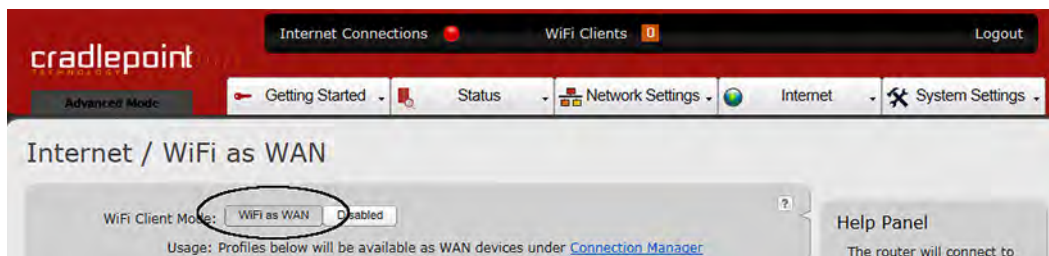
1. In the Internet Explorer address bar type "cp" or "192.168.0.1" (without quotation). Press ENTER/RETURN.
2. Enter your password to login. Your unique password is either the administrator password you set earlier or the default password found on the bottom label of the CTR35.
3. Click Mode Button to Toggle to **Advanced Mode**.



4. Click **Internet**.
5. Click **WiFi as WAN**.



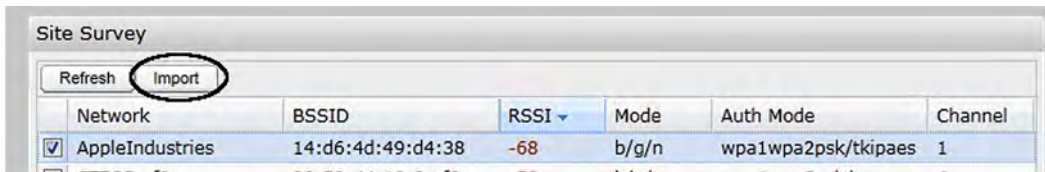
6. Select **WiFi as WAN** Button to Activate WiFi as WAN



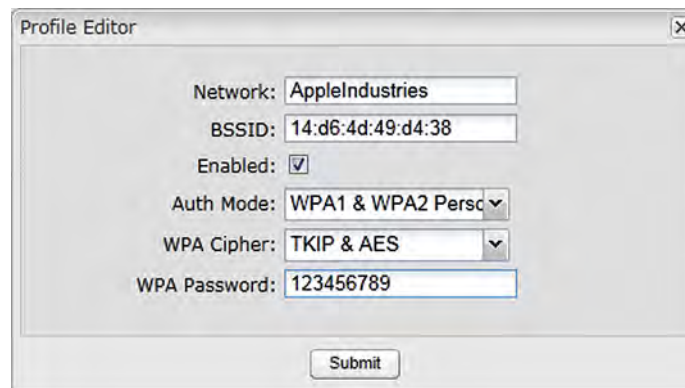
7. Under Site Survey, select the WiFi network you wish to use by checking the box next to it.



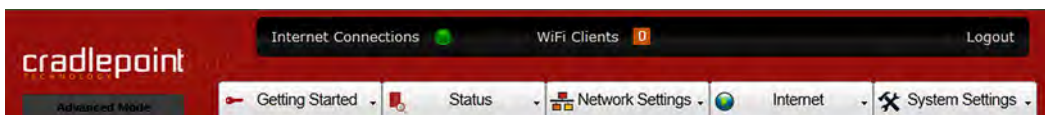
8. Click **Import**.



9. If the network you wish to use is secured, you will need to enter the Password in the screen that comes up relating to that specific network. Whether you have to enter a security password or not, click Submit on that screen that shows up.



10. If the Wifi-as-WAN network was successful in importing, you will see a Green Dot next to Internet Connections at the top of the Administration Page.



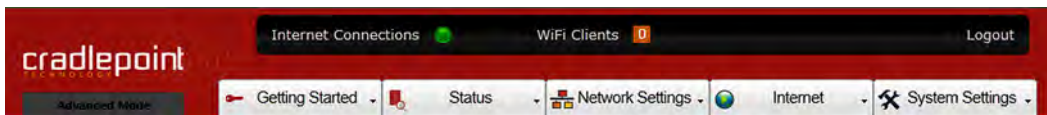
At this point, you need to close your web-browser, check to see if you're still connected to your router, if you are not, connect back to it again. Open a web-browser again after you are connected to the router; if you are not able to get through to the Internet, login to your router's admin pages again, go to Status -> Router Console, where you see "Internet," check to see the status of your connection. NOTE: it can take several minutes to establish the connection with the network you are using.

Step 4-2: If you are using a 3G/4G broadband network

It is important that when selecting a 3G/4G Broadband Network for your location that you verify that signal strength of the Wireless Provider is adequate for Data Transfers at the location for your selected provider. If your primary provider doesn't have good signal strength at the location you will need to look into an alternative 3G/4G provider or look into one of the two other options for connecting your device. We also highly recommend that an External High Gain antenna be used when possible to ensure the highest quality of signal.



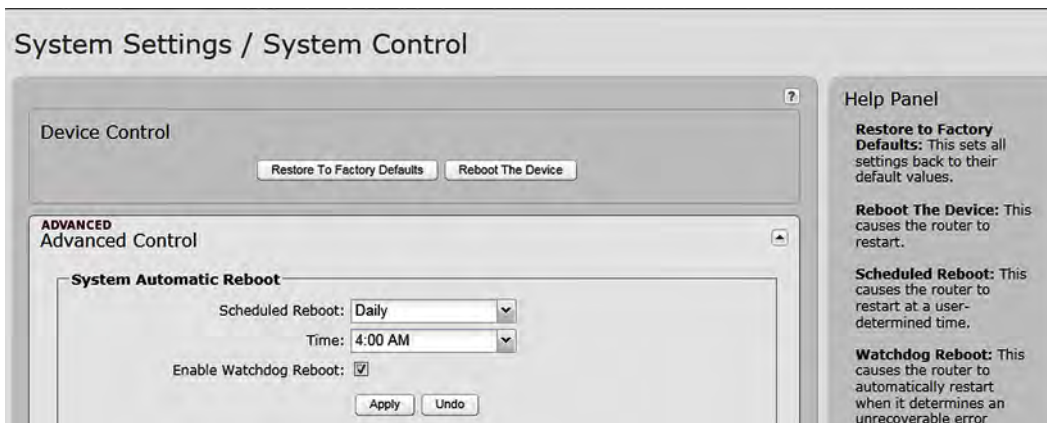
1. Verify 3G/4G Broadband Network USB Modem is plugged into the Cradle-Point USB Port.
2. In the Internet Explorer address bar type "cp" or "192.168.0.1" (without quotation) in the address bar. Press ENTER/RETURN.
3. Enter your password to login. Your unique password is either the administrator password you set earlier or the default password found on the bottom label of the CTR35.
4. If 3G/4G Broadband Network USB Modem has successfully connected, you will see a Green Dot next to Internet Connections at the top of the Administration Page.



Step 5: Setup system automatic reboots

It is recommended that you enable System Automatic Reboots to allow for the device to have a Daily Reboot.

1. In the Internet Explorer address bar type "cp" or "192.168.0.1" (without quotation). Press ENTER/RETURN.
2. Enter your password to login. Your unique password is either the administrator password you set earlier or the default password found on the bottom label of the CTR35.
3. Click Mode Button to Toggle to **Advanced Mode**.
4. Select SYSTEM SETTINGS on the top navigation bar, then SYSTEM CONTROL in the drop down menu.
5. Set Scheduled Reboot to Daily.
6. Set Time to a Time when the PhotoBooth will not be used as you do not want the CradlePoint to reboot during the PhotoBooths normal operation.
7. Ensure that Enable Watchdog Reboot is Checked.
8. Select Apply.

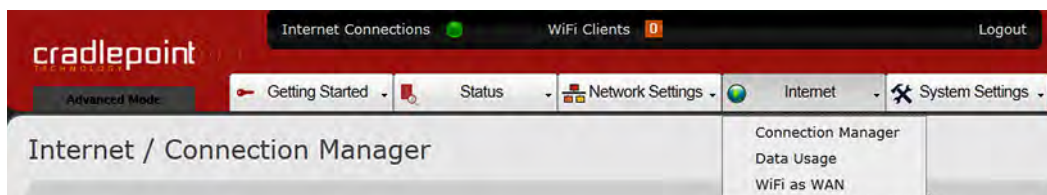




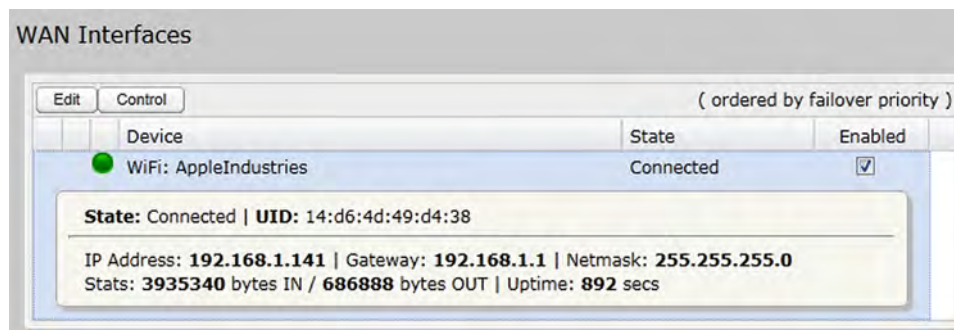
Step 6: Setup Failure checks

It is necessary that you enable Failure Checks to ensure that the Cradle-Point reestablish an Internet Connection if it loses its connection to the Internet.

1. In the Internet Explorer address bar type "cp" or "192.168.0.1" (without quotation). Press ENTER/RETURN. There is a shortcut called "Cradle point administration console" in the Start menu of Windows to get this easily.
2. Enter your password to login. Your unique password is either the administrator password you set earlier or the default password found on the bottom label of the CTR35.
3. Click Mode Button to Toggle to **Advanced Mode**.
4. Click **Internet**.
5. Click **Connection Manager**.



6. In Connection Manager click your device under WAN Interfaces and hit **Edit**.



7. Click Arrow to Right of **Failure Check** to open Advanced Options.
8. Set Idle Check Interval to 30 seconds.
9. Set Monitor while connected to Active Ping.
10. Set Ping IP Address to 4.2.2.2.
11. Click Submit.



WAN Configuration

General Settings

Device Settings

ADVANCED
Failure Check

Idle Check Interval: seconds

Monitor while connected:

Ping IP Address:

ADVANCED
Failback Configuration

Submit Cancel

Additional help

For additional how-to documents and support with your CradlePoint CTR35 when utilizing the WiFi as WAN or 3G/4G Broadband Network Option, please visit the CradlePoint Support Site at <http://www.cradlepoint.com/CTR35>.



Remote Access

• Introduction

LogMeIn Free is a basic remote control utility for accessing your PC or Mac, which can be used to Remotely Administer a Face Place Photo Booth. For full remote access, including file transfer, remote printing and file sharing, you may want to try *LogMeIn Pro*.

Compare LogMeIn Free to LogMeIn Pro

LogMeIn Free includes:

- ◇ Access from any Internet-connected web browser.
- ◇ Access to a Windows PC or Mac.
- ◇ Remote control and desktop viewing.
- ◇ Copy and paste between computers.
- ◇ Wake on LAN.
- ◇ Reboot/reconnect (including safe mode).
- ◇ Basic reports (remote access sessions and user access).
- ◇ Chat.
- ◇ AES 256-bit encryption.
- ◇ SSL/TLS intrusion detection.
- ◇ IP address lockout.
- ◇ No need for firewall, router or proxy configuration.
- ◇ No requirement for remote PC admin rights.

We will help you get LogMeIn Installed on a Face Place Photo Booth so that you can begin Remotely Monitoring and Administering your Face Place Photo Booth.

• Register for LogMeIn Free

Visit the LogMeIn Free Registration Page at <https://secure.logmein.com/products/free/register.aspx> and sign up for your free account.

• Downloading LogMeIn Installation File

Log into your newly created LogMeIn Account at <https://www.logmein.com> and select the **Add Computer** button to access the New Computer Screen. If prompted to select a Subscription Type, select the Subscription Type that fits your needs and follow any on screen instructions.

Download the Installation File to a USB Flash Stick and remove the USB Flash Drive.



● **Install LogMeIn on Face Place Photo Booth**

1. Shut Down Photo Booth.
2. Connect a Keyboard & Mouse to Photo Booth CPU
3. Connect USB Flash Drive to Photo Booth CPU.
4. Power on the Photo Booth and Allow Photo Booth to fully Startup.

NOTE: The Photo Booth must be connected to an active internet connection.

5. Close the Photo Booth Application by clicking the Message Area and hitting ALT+F4 on a Keyboard.
6. Open **Windows Explorer** by Selecting **Start->My Computer**.
7. Double Click **E Drive** to Explore USB Flash Drive.
8. Double Click the LogMeIn Installation File you downloaded to run Installer.
9. Select **Run** if prompted by a Windows Open Dialog Box.
10. Click **Next** to Start Installation.



11. Click **Next** to Continue Installation.

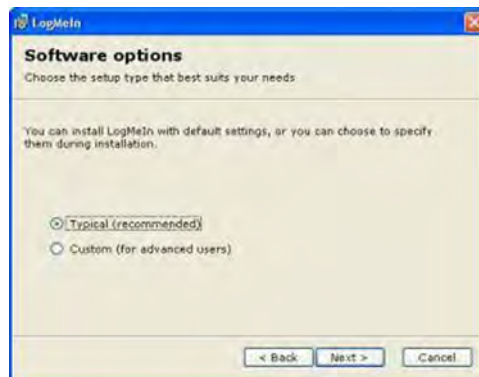




12. Click **I Agree** to Continue Installation.



13. Select **Typical (recommended)** and Click **Next** to Continue Installation.



14. Enter **Description** in the following format: Operator Name – Location Name (ie. **Amusement Inc – Pizza Shack NY**).
15. Click **Next** to Continue Installation.





16. Select an Access Code and enter in both textboxes. (Please ensure that you remember this Access Code).
17. Click **Next** to Continue Installation.



18. Click **Next** to Continue Installation.



19. Select **Launch LogMeIn when finished** and Click **Finish** to Finish Installation.





• **Configure LogMeIn for use alongside Photo Booth**

It is necessary to configure LogMeIn exactly as described below so that the LogMeIn Application does not interfere with the Face Place Photo Booth Application.

1. Select **Options->Preferences**



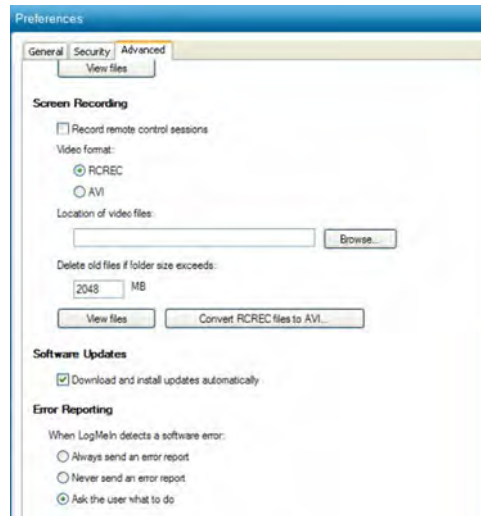
2. Unselect the following options in **General** Tab:

- ◇ Use display accelerator
- ◇ Lock when connection has been lost
- ◇ Lock when connection has been timed out





3. Unselect the following options in **Advanced** Tab:
 - ◇ **Download and install updates automatically**



4. Click OK to Save Settings
5. Remove the USB Flash Stick, Keyboard, & Mouse.
6. Restart the Photo Booth.
7. LogMeIn is now properly installed & configured.

● **Connecting to Photo Booth using LogMeIn**

Connect to any computer that meets these conditions:

- ◇ **LogMeIn Pro or Free must be installed and running on the host.**
- ◇ **The host must be turned on.**
- ◇ **The host must be connected to the Internet.**
- ◇ **The host must not be in Sleep mode or Hibernation mode.**

Tip: If the host computer is on a network with other LogMeIn host computers then you may be able to wake it using Wake On LAN. To review Wake On LAN requirements, see [How to Wake a Computer in Sleep Mode or Powered Off Using Wake On LAN](#).



To connect:

1. Go to www.LogMeIn.com.
2. Log in to your account using your LogMeIn ID (email address) and password. The Home page is displayed.
3. On the Home page, click a connection option for the computer you want to access.

Tip: Control-click or middle-click to open the session in a new browser tab. On a Mac, use Command-click.

- ◇ Click the **Main Menu** link to connect to the host Main Menu (also known as Compact View) for basic remote access functionality.
- ◇ Click the computer name to start controlling the host's desktop.
- ◇ Windows hosts only. Click **Dashboard** to connect to the host Dashboard (also known as Detailed Mode) for access to advanced remote management functionality.
- ◇ Click **File Manager** to go directly to the host File Manager.
- ◇ In List View, click the blue arrow next to the computer you want to remote control and click **Remote Control in new window** to open the session in a new window or browser tab.

LogMeIn will attempt to make a connection to the host. You will be prompted to authenticate to the host.

4. Log in to the computer using the appropriate authentication method:
 - ◇ If prompted, enter the username and password you would enter if you were sitting in front of the host computer.
 - ◇ If prompted, enter the Computer Access Code you created when you installed LogMeIn to the host computer.

Your session begins upon successful authentication.

Important: The first time you start a remote control session you will be asked to install a browser plug-in to the client computer, which is the computer you are using to initiate the remote session.



• **Starting Remote Control**

Choose the most convenient way to gain control of a host computer.

From the Home page

Click the name of the computer you want to control to go directly to remote control.

From the Host Main Menu

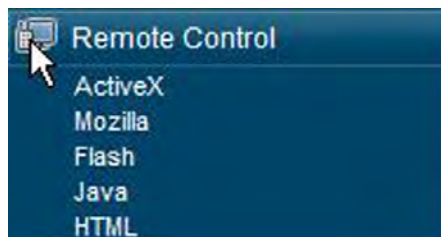
Once connected to the host, click **Remote Control** on the left menu to start remote control.



From the Host Dashboard

 Available on Windows hosts only.

Once connected to a Pro host, go to the Dashboard (**Detailed mode**) and click the Remote Control **icon** (not the text). Select a remote control client from the list.

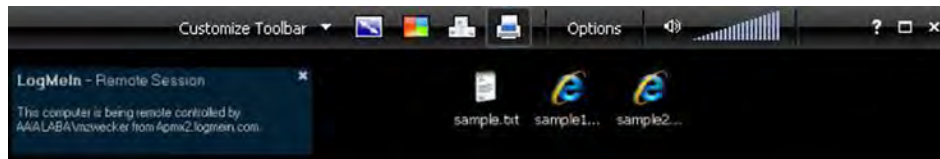




Once Connected

Once you have launched remote control and successfully authenticated to the host computer, you see the host computer's desktop and the LogMeIn remote control toolbar.

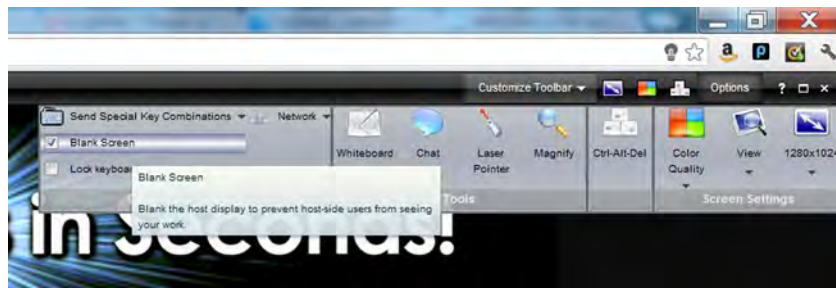
Sample remote control toolbar for LogMeIn Pro.



Complete step-by-step instructions are available in the [LogMeIn Free User Guide](#).

• Working with the Photo Booth using LogMeIn

Once Remote Control is started, it is recommended that you blank the screen of the Photo Booth using the **Options->Blank Screen** Option. When Blank Screen is enabled, the Photo Booth monitor will be blank while you are connected which will prevent users from seeing what you are doing and your access codes.



NOTE: If this is the first time enabling Blank Screen, you will need to install the Plug-In on the Photo Booth. Select Install to allow the Driver to install. Once the Driver has been successfully loaded a dialog box will be displayed that you must select OK.



It is recommended that you lock the keyboard/mouse of the Photo Booth using the **Option->Lock Keyboard** option.


You can now use your mouse to work with the Photo Booth like you were at the booth using the touchscreen. You can pull up the Access Keyboard by clicking at the bottom center of the screen like you would normally use your finger when at the booth.

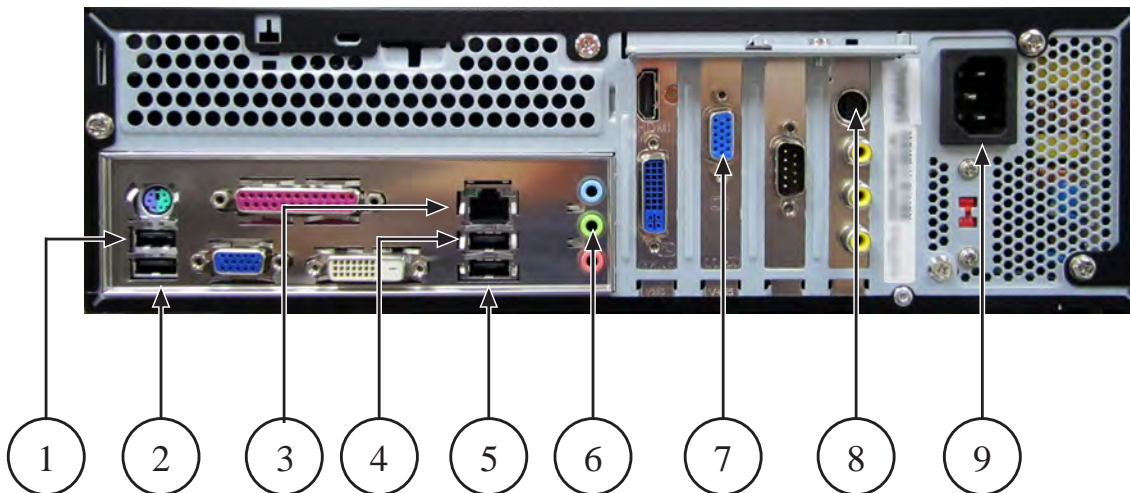
NOTE: You MUST use the on-screen keyboard whenever it is displayed to enter items within the Configuration Application. If you use your physical keyboard the proper settings may not be saved and you could corrupt the Photo Booth Configuration causing your Photo Booth to not operate properly.



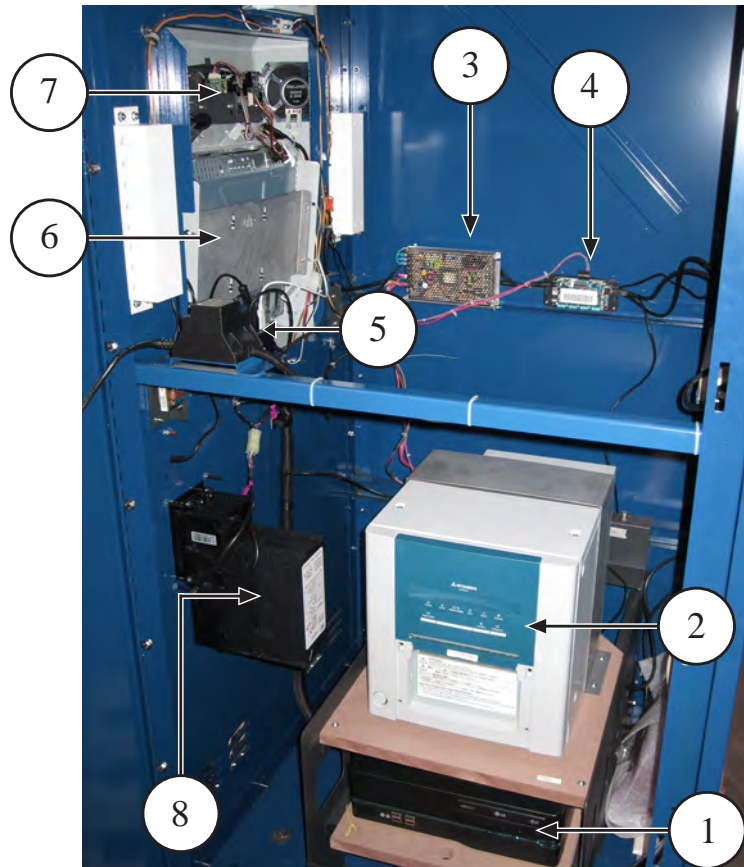
Hardware (Specific)

• PC Computer connections

 Below is an illustration of where connections should be made, your actual machine may not have connections in the same position



1. USB Extension cable.
2. I/O Board.
3. Internet Cradlepoint router.
4. Printer.
5. USB Hub.
6. Audio connector (Green one).
7. Monitor.
8. S video.
9. Power cord.



1. Computer.
2. Printer.
3. Power Supply.
4. I/O Board
5. 4 Port USB Hub. (Monitor, CReader, microphone, ...).
6. Monitor.
7. Camera.
8. Dollar Bill Validator.



Hardware generic

• Printer description

The Mitsubishi CP9550DW-A is a dye sublimation thermal, photographic quality printer. The printer produces fast, high-resolution black and white and color photographs for indoor, self-service applications. The photo booth computer sends digital image data to the printer. Output is two four-image, two-by-six-inch photo strip and 4x6 photos. Each image is two inches x one and a half inches. From exposure to vend, per-strip turnaround time is about 17 seconds.

• Operating requirements

Power supply	AC 120V 50/60Hz
Power consumption	3.5A (AC 120V, 50/60Hz).

Operating condition	Temperature: 5-40 °C (41-104 °F)	Humidity 30-80% (No dewing)
---------------------	-------------------------------------	--------------------------------


• Equipment characteristics

Shipping weight	Design type	Construction
Approx. 850lbs. (385.55kg.).	Coin-operated photo booth.	Powder-coated, sheet steel.
System	Peripherals	
<ul style="list-style-type: none"> 1 PCB, Intel microcontroller-based. Windows (OS). OS & application PC. I/O control board. Credit card reader (optional). 	<ul style="list-style-type: none"> 1 Mitsubishi digital printer CP9550DW-A. Digital sound system. Sony Digital Camera FCB-IX47C/IX45CP or FCB-IX47C/IX47C. LCD Touch Screen Monitor. Dollar Bill Validator. On Screen Diagnostic and settings. 	

Operator variables	<ul style="list-style-type: none"> Pricing. Logo. Color Adjustments. Backgrounds. Sound volume. 	<ul style="list-style-type: none"> Date & Time. Lighting. Programs. Real-time picture quality. Program Choices on/off.
--------------------	--	---



• **Loading media (Film and paper)**

	English	Français
	<ul style="list-style-type: none"> • AVOID BURNS AND HEAD DAMAGE! Don't touch the print head. • Only use Mitsubishi FP2000 media (Apple Industries part # FP2000) in the printer. Other media will cause the booth not to work and may cause printer, PC and control board damage. Using other paper will void your warranty. 	<ul style="list-style-type: none"> • ÉVITEZ DES BRÛLURES ET DU DOMMAGE À LA TÊTE D'IMPRESSION. Ne touchez pas la tête d'impression. • Seulement utilisez média Mitsubishi FP2000 (pièce d'Apple Industries n° FP2000) dans l'imprimante. Usage d'autre média causera le mal fonctionnement du photomaton et peut causer du dommage à l'imprimante, à l'ordinateur, et à la carte de contrôle. Usage d'autre papier annulera votre garantie.

Ink ribbon installation



Ink sheet.



Turn on the power, then press the Door Open button.



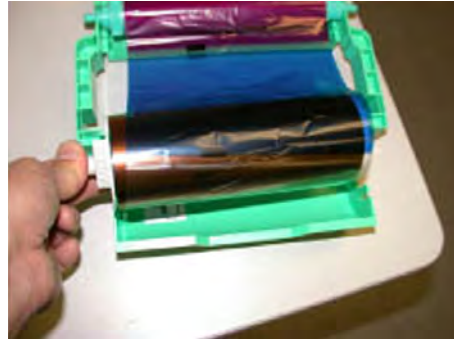
Lower the tray.



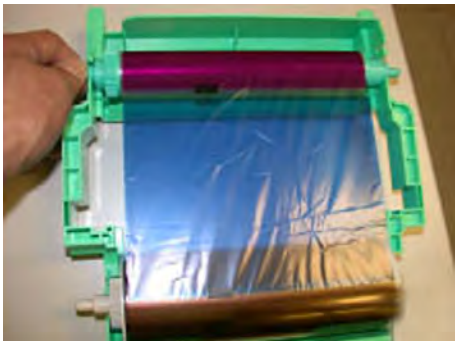
Pull the tray out.



Lift up roll at front.



Supply roll at back, ribbon comes from bottom to top.



Tighten the sheet.



Insert the tray

Ink ribbon installation



Push the tray up, you will hear a click when the tray is in the correct position.



Final position.



Paper roll assembly



Take out the parts from the box.



Squeeze the two notches towards center.



Insert it into the paper roll.



Insert the other part into the paper roll.

Paper loading



Drop it into the slot.



Insert the cartridge.



Insert between the metal and black rubber roller.



Paper edge needs to reach the black cover.



Close the door.

Paper feeding mechanism



When the door is closed.




Printer will automatically feed and cut three times.




Transportation requirements



1. Remove paper.
2. Remove ink sheet but leave empty tray in.
3. Close the door.
4. Wait until the paper/ink ribbon green LED starts blinking.

	English	Français
	<ul style="list-style-type: none"> • Only use Mitsubishi FP2000 media (Apple Industries part # FP2000) in the printers. Other media will cause the photo booth not to work and may cause printer damage. Using other media will void your warranty. • Every time you replenish media, remove any paper scrap remains from inside the machine. This buildup of paper scrap poses a fire hazard. 	<ul style="list-style-type: none"> • Seulement utilisez média Mitsubishi FP2000 (pièce d'Apple Industries n° FP2000) dans l'imprimante. Usage d'autre média causera le mal fonctionnement du photomaton et peut causer du dommage à l'imprimante. Usage d'autre média annulera votre garantie. • Chaque fois vous remettez du papier, enlevez le papier résiduel de la machine. Débris de papier pose un risque d'incendie.



- Store paper in a dark and dry place. Never store print paper in places that are hot humid or exposed to direct sunlight. Temperatures must be between 55°F (13°C) and 90°F (32°C).
- Fingerprints or dust on the papers surface may degrade print quality and cause paper jams.
- The paper and ink ribbon are made of plastic. When you dispose of them, follow local regulations concerning disposal.



Credit card activation (If installed)

● **Credit Card Reader Activation Instructions**

Apple Industries (Apple) has teamed with USA Technologies (USAT) as the merchant service provider for your card reader equipment. They are responsible for the processing of credit/debit transactions of your photo booth equipment, and the suite of services associated with card reader functionality. When you are ready to move forward with credit/debit card acceptance, USAT will need to setup a merchant account for your company. To do this, please contact USA Technologies at customerservice@usatech.com or call their toll free number at 1-888-561-4748.

Instructions:

1. Connect your photo booth to the internet (See Network Connectivity section of this manual for instructions).
2. Perform a “test” swipe with a credit card, you should see a green light illuminate on the card reader.
3. Call or email USA Technologies to setup your merchant account (Note: You will need the serial number from your credit card reader, which is listed in the electronic meter report for your photo booth—See Meter Reports section of this manual for more information).





Maintenance

• **Booth-Wide inspection**

Periodically check the entire booth. Your profits depend on booth cleanliness and booth performance. A shabby, malfunctioning booth can't merchandise itself as well as a properly maintained booth can. Upkeep is the only way to assure that the booth can earn for you. Regularly check that the booth...

- ◇ Has plenty of paper. Use only Apple Industries FP2000 media (Apple Industries part # FP2000). Be sure that you load it properly.
- ◇ Stacker is installed and empty at the beginning of every business day.
- ◇ Seat is clean.
- ◇ It is clean and free from graffiti, stains and scratches. Replace or refurbish worn-out graphics and surfaces.
- ◇ Pricing and vending options are up to date and competitive.
- ◇ Bill validator operates properly and doesn't stick, jam or otherwise malfunction.
- ◇ Camera lens window is clean, graffiti-free and unscratched.
- ◇ Fluorescent Light Bulbs all operate properly.
- ◇ Rapidly exposes and prints splendid, snappy images with a full tonal range.

• **Camera window cleaning**

1. Spray plastic or glass cleaner on a lint-free, non-abrasive wipe. This cleaner is for the window only. Never use it directly on the camera lens!
2. Gently wipe dust and dirt off the camera window inside the booth. Use a straight-across motion, rather than a circular motion. Don't scrub over stubborn dirt.
3. Inspect the glass for cracks. Scratches and gouges that may degrade images.

• **Printer inspection**

Be sure that you load the paper properly. Clean the printer at least once a year. Regularly check that the print.

- ◇ Feeds paper properly.
- ◇ Operates as it did when new.
- ◇ Makes no abnormal sound.
- ◇ Produces outstanding print quality.



● **Replacing Fluorescent Light Bulbs**

1. Turn off booth power.
2. Open the service door.
3. Use a nut driver. Gently pull and replace the Fluorescent Light Bulbs.
4. Fasten diffuser holder.
5. Bulbs are accessible once door is removed.
6. Gently pull and replace.
7. Close service door, remove key.
8. Turn on booth power and verify normal lamp operation.

● **Replacing the dome lamp (If applicable)**

1. Turn off booth power.
2. Two nuts secure the dome lamp to the booth roof. The screws for these nuts are on the ceiling of the Seat Unit. (Note a third screw that secures the lamp flange under the lamp diffuser. Avoid loosening this screw.) Use a screwdriver and nut driver to remove dome lamp screws and nuts.
3. Remove the lamp diffuser.
4. Replace the LED strip. Your replacement should be 12vDC LEDs. Call Apple for exact replacement part.
5. Before replacing the reflector, be sure that the lamp socket flange is tight. If it's loose, tighten it.
6. Replace the lamp diffuser.
7. Use a screwdriver and nut driver to secure dome lamp reflector screws and nuts.
8. Turn on booth power and verify normal lamp operation.


● **Care and handling of your touchscreen**


The following tips will help keep your touchscreen functioning at the optimal level.

- ◇ To avoid risk of electric shock, do not disassemble the brick power supply or display unit cabinet. The unit is not user serviceable. Remember to unplug the display unit from the power outlet before cleaning
- ◇ Do not use alcohol (methyl, ethyl or isopropyl) or any strong dissolvent. Do not use thinner or benzene, abrasive cleaners or compressed air.
- ◇ To clean the display unit cabinet, use a cloth lightly dampened with a mild detergent.
- ◇ Avoid getting liquids inside your touchscreen. If liquid does get inside, have a qualified service technician check it before you power it on again.
- ◇ Do not wipe the screen with a cloth or sponge that could scratch the surface.
- ◇ To clean the touchscreen, **use a window or glass cleaner that does NOT contain ammonia**. Put the cleaner on a clean cloth and wipe the touchscreen. Never apply the cleaner directly on the touchscreen.



Troubleshooting

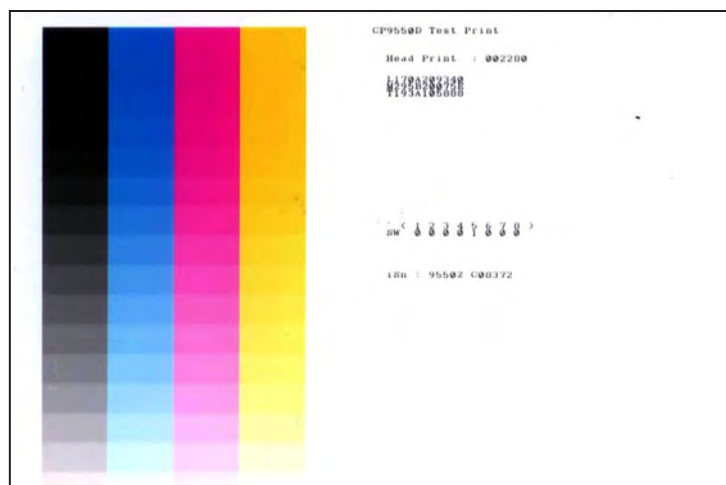
	<ul style="list-style-type: none"> • Periodically check the booth by inserting bills, taking a picture and observing the vended product. • Repair or replace anything that isn't as good as new.
---	--

	English	Français
	<p>For test purposes, you can isolate a printer from the rest of the system. When testing, run the printer directly off an AC power source.</p>	<p>Pour des essais, vous pouvez isoler une imprimante du reste du système. Pendant les essais, branchez l'imprimante directement dans une source d'alimentation c.a.</p>

• **Printer test**

Built in pattern print for Mitsubishi CP9550DW-A.

1. Turn off printer power.
2. While holding down: Door Open and Feed/Cut buttons, turn printer on.
3. Continue to hold buttons until you hear a beeping sound, then release them.
4. Press the Cancel button (must hear a beeping sound and release).
5. In approximately ten seconds you should see the Data LED turn on, it will now print the test pattern.





• Using troubleshooting tables

Troubleshooting Tables guide you to appropriate remedies based on photo booth malfunctions. The idea is to think of each malfunction or indication as a symptom. A symptom usually isn't the problem, and you shouldn't treat the symptom as the problem. Many problems produce more than one symptom. Some of these symptoms may be misleading. Together, all the symptoms generally suggest one or more causes. Each cause associates with a treatment procedure.

Start troubleshooting by finding your booth's symptom on the tables. By testing and considering each cause, you'll find one or more that seem more likely. The Troubleshooting Tables should help you to narrow down the possibilities and take corrective action.

SYMPTOM	CAUSE	REQUIRED ACTION
No illumination, no obvious sign of operation.	<ul style="list-style-type: none"> No AC power Open Fuse 	<ul style="list-style-type: none"> Check that booth is plugged in. Check that booth power switch is on. Check BREAKER located on Power strip and switch
Machine lights up, monitor flashes brand logo then there is no activity on the screen.	<ul style="list-style-type: none"> No power to the computer. 	<ul style="list-style-type: none"> Check to see that the power cord that plugs into the computer is snug in the socket on the PC. Check to see that the PC has not shut itself off. Press the power button on the front of the PC case. Replace the power supply inside the computer case. Call customer service to obtain a new one.
Machine lights up, LED's on computer case illuminate, after 3 minutes or so the DBA lights illuminate and blink. Monitor brand logo does not appear.	<ul style="list-style-type: none"> Monitor has no power or has shut itself off during transport. 	<ul style="list-style-type: none"> Check to see that the power cord and the vga signal cable to the monitor is connected to the back of the monitor.

Camera		
SYMPTOM	CAUSE	REQUIRED ACTION
Live image on screen is blurry and resulting prints are blurry as well.	<ul style="list-style-type: none"> Dirt and debris on camera glass. 	<ul style="list-style-type: none"> Spray glass cleaner on paper towel and clean glass on both sides. If problems persists closer examination is necessary, often the cause can be detected by studying the blurry print and find the object that the camera is focusing on.

Meter report error displayed	Cause of error	Possible solutions
No email address has been entered. Please enter email address in Configuration Reports section.	<ul style="list-style-type: none"> Operator has attempted to send an email from the Meter Report but no Email address is configured in the Configuration Application. 	<ul style="list-style-type: none"> Open Configuration Application and enter email address under Configuration Reports section.



Printer		
SYMPTOM	CAUSE	REQUIRED ACTION
Machine comes up and after the the photobooth load a message appears at the end of the startup that says "Fatal Printer Error... Check connections and reboot".	<ul style="list-style-type: none"> • Printer is unplugged or off. • Printer is in a state of alarm. 	<ul style="list-style-type: none"> • Check to see if the printer power and ready LED's are lit. • Correct source of alarm (paper jam etc).
Machine comes up and after the the photobooth loads a message appears at the end of the startup that says "Unsupported Media Type".	<ul style="list-style-type: none"> • Incorrect media loaded in Printer. 	<ul style="list-style-type: none"> • Make sure that you have loaded into your printer GENUINE Apple Industries Print media specific to your machine. • The Apple Photo 2 Go uses FP2000.

User interface error displayed	Cause of error	Possible solutions
Problem starting Photobooth. Please notify the Operator.	<ul style="list-style-type: none"> • Fatal Photo Booth Error during Startup Diagnostic Checks. 	<ul style="list-style-type: none"> • Check I/O board is properly connected and powered up if not on Free Play. • Check that Credit Card Reader is properly connected if not on Free Play. • Check that the camera is properly connected to all connections (Serial & S-video) and powered up.
Printer is not found. Check USB or Power On.	<ul style="list-style-type: none"> • Printer is not found. 	<ul style="list-style-type: none"> • Check printer is properly connected, powered on and ready.
The printer door is open. Close the door.	<ul style="list-style-type: none"> • Printer door is open. 	<ul style="list-style-type: none"> • Close the printer door.
There is no sheet. New media (Ink & Paper).	<ul style="list-style-type: none"> • Media is missing from Printer. 	<ul style="list-style-type: none"> • Insert the Apple-provided media into the printer. (Ink & Paper).
Print Error.	<ul style="list-style-type: none"> • The Printer failed as printing. 	<ul style="list-style-type: none"> • Check printer is properly connected, powered on and ready.
No faces detected. Please look at the camera and try again. Or select a different theme.	<ul style="list-style-type: none"> • A theme requiring Facial Detection (Face Replacement, Crazy Hair, Postcard & Passport Style) was selected but the user did not look at the camera for all pictures. 	<ul style="list-style-type: none"> • Have the user look at the camera for all pictures or select a theme that doesn't require facial detection. (Classic, Fun Borders, Holiday Borders).
Could not share with Facebook. Check username and password.	<ul style="list-style-type: none"> • Unable to share with Facebook. 	<ul style="list-style-type: none"> • Have the user verify their Facebook credentials are correct. • Verify that the Photo Booth is properly online and connected to the internet.
An error occurred. Please try again.	<ul style="list-style-type: none"> • The camera has stopped communicating with the Photo Booth. 	<ul style="list-style-type: none"> • Check that the camera is properly connected to all connections (Serial & S-video) and powered up.



Configuration error displayed	Cause of error	Possible solutions
Email cannot be sent at this time. Please check internet connection.	<ul style="list-style-type: none"> Operator has attempted to send an email from the Meter Report but no internet access is established. 	<ul style="list-style-type: none"> Verify the booth is properly online and connected to the internet and try again.
Cannot disable CC Reader while free play and dollar bill validator (DBV) are disabled.	<ul style="list-style-type: none"> At least one payment method must be enabled when not on Free Play. 	<ul style="list-style-type: none"> Either enable Free Play or enable the DBV.
Cannot disable DBV Reader while free play and CC are disabled.	<ul style="list-style-type: none"> At least one payment method must be enabled when not on Free Play. 	<ul style="list-style-type: none"> Either enable Free Play or enable the CC.
Cannot disable free play while DBV and Eport are disabled.	<ul style="list-style-type: none"> At least one payment method must be enabled when not on Free Play. 	<ul style="list-style-type: none"> Either enable DBV or CC before attempted to disable Free Play.
Cannot disable Color/B&W/Sephia while Custom strip contains Color/B&W/Sephia.	<ul style="list-style-type: none"> The operator has attempted to disable either Color, B&W or Sephia while the Custom Strip contains that program choice. 	<ul style="list-style-type: none"> Remove all instances of program choice from Custom Strip setup prior to disabling.
Invalid action. Must set a program to default.	<ul style="list-style-type: none"> The operator has attempted to remove the default option from a program while no other programs are set to default. 	<ul style="list-style-type: none"> One program has to be set as default. Have the operator select another program as the default program.
No email found.	<ul style="list-style-type: none"> Operator has attempted to send Email Captures but no Email addresses are currently captured. 	<ul style="list-style-type: none"> Try again later after email addresses have been captured.
Unable to connect to Facebook. Try again or check credentials.	<ul style="list-style-type: none"> Operator has attempted to add credentials to Facebook Batch but unable to connect with Facebook. 	<ul style="list-style-type: none"> Have the operator verify their Facebook credentials are correct. Verify that the Photo Booth is properly online and connected to the internet.
Unable to Post Media to Facebook. Try again or check credentials.	<ul style="list-style-type: none"> Operator has attempted to send to Facebook Batch but unable to connect with Facebook because user credentials are incorrect. 	<ul style="list-style-type: none"> Have the operator verify their Facebook credentials are correct.
Facebook unavailable, please check internet connection.	<ul style="list-style-type: none"> Operator has attempted to send to Facebook Batch but unable to connect with Facebook because there is no internet connection. 	<ul style="list-style-type: none"> Verify that the Photo Booth is properly online and connected to the internet.

If problems persist, please contact our technical support at (516) 619-8000 during business hours. (8 am to 5 pm Eastern Time.)

APPLE INDUSTRIES, INC. WARRANTY POLICY

All parts (except for light bulbs and cabinet wheels) are under Warranty against actual defects in material and workmanship under normal and customary use for a period of one year from the date of purchase. This Warranty does not include labor, unless the defect occurs Within 30 days of purchase. The customer is responsible for the inbound freight of items sent in for Warranty repair. The customer must call customer service for an RMA on all returns. There is no charge for utilizing our telephone technical assistance, which is available 8:00 am-5:00 pm EST Monday-Friday, except holidays.

Apple may, in its discretion, provide an advance exchange of parts under Warranty. In the event that an advance exchange of parts is provided by Apple, regular ground shipping (U.S. only) of the new parts will be provided by Apple, at no cost to the customer. Any special shipping requests are the responsibility of the customer. Shipping to return the defective parts is the sole responsibility of the customer. All such defective parts must be returned within 15 calendar days after receiving the new replacement parts. If the defective parts have not been returned by the customer within the 15 calendar days, or if any of the parts are deemed not defective or otherwise not under warranty, no credit will be issued, the advance replacement will be considered a final sale and Apple will charge customer's credit card accordingly. Apple may require customer's credit card as a condition to an advance exchange of parts.

This Warranty shall be null and void if the equipment has been tampered with or serviced by a person not authorized by Apple to perform the service.

ANY IMPLIED WARRANTIES, INCLUDING WITHOUT LIMITATION THE IMPLIED WARRANTIES OF MERCHANTABILITY AND FITNESS FOR A PARTICULAR PURPOSE, ARE EXPRESSLY DISCLAIMED. THIS EXPRESS LIMITED WARRANTY IS THE EXCLUSIVE REMEDY OF THE CUSTOMER, AND IS PROVIDED IN LIEU OF ALL OTHER WARRANTIES, EXPRESS OR IMPLIED. IN NO EVENT SHALL APPLE OR ANY OF ITS RELATED COMPANIES BE LIABLE, WHETHER IN CONTRACT OR TORT (INCLUDING NEGLIGENCE) FOR DAMAGES IN EXCESS OF THE PURCHASE PRICE OF THE PRODUCT, OR FOR ANY INDIRECT, INCIDENTAL, SPECIAL OR CONSEQUENTIAL DAMAGES OF ANY KIND, OR LOSS OF REVENUE OR PROFITS.

IMPORTANT SAFETY WARNING

Disclaimer: Apple Industries/Face Place shall not be liable or responsible for any damages resulting from the handling, use or operation of its photo booths. With your purchase, the buyer confirms that you have read and understand the following warnings and you agree that you are responsible for all damages and injuries caused by the handling, operation or use of the photo booths, which include any personal injuries. The Face Place Deluxe: Theme Park Edition photo booth is designed as a weather resistant photo booth capable of being left outdoors under normal weather conditions. It is not designed for nor shall it be used during inclement weather events including rain, high winds, thunderstorms, snow, extreme heats (in excess of 100 degrees Fahrenheit), or cold (below 50 degrees Fahrenheit). If such inclement weather conditions occur, the photo booth's operation should cease immediately and the photo booth should be thoroughly inspected prior to resuming operation.



Apple Industries Inc.
200 Forest Drive
Building 8
Greenvale, NY 11548
P (516) 619-8000
F (516) 945-3649
www.faceplacephoto.com

