



BO-46-1001 – Blackout Ticket

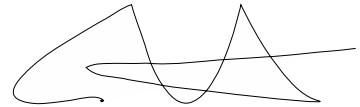
Operation & Service Manual

Ticket Version 1.2

*** Read this manual before use**

General Remark

If you encounter any difficulties or if you need support on how to update and/ or install your Blackout product, we invite you to contact your local distributor or reach us at support@aagames.com or by calling our support line +1-450-824-1671



Adrenaline Amusements Team

Adrenaline Amusements
1150 Levis, Suite 302
Terrebonne, Qc
Canada
J6W 5S6

Table of Contents

Contents

General Remark	2
Table of Contents.....	3
Chapter 01 - Preface	4
Precaution for Game Operation.....	4
Safety.....	5
Environmental Conditions.....	5
Chapter 02- Unit Features	6
Hardware Features.....	6
Cabinet Facts	6
Voltage	6
Chapter 03 - Unit Installation	7
Assembling your Blackout Unit	7
Chapter 04 - Operator Menu, Game Setup	8
Chapter 05 - Parts	10

Chapter 01 - Preface

Please read this page before preparing your Blackout product for game play.

The following safety instructions apply to all game operators and service personnel. Specific warnings and cautions will be included throughout this manual.

Use the following safety guidelines to help protect the system from potential damage and to ensure your personal safety:

- Electronic components in the game cabinet run on 110V AC 60Hz (220V/ 50Hz in most of Europe, the Middle East and the Far East delivered units).
- To help prevent electric shock, plug the system into a properly grounded power source. These cables are equipped with 3-prong plugs to help ensure proper grounding. Do not use adapter plugs or remove the grounding prong from a cable. If you must use an extension cable, use a 3-wire cable with properly grounded plugs.
- To help protect your system from sudden increases and decreases in electrical power, use a surge suppressor, line conditioner or Uninterruptible Power Supply (UPS).
- Be sure nothing rests on the system's cables and that the cables are not located where they can be stepped on or tripped over.
- Keep your system far away from radiators and other heat sources.
- Do not block cooling vents.

Precaution for Game Operation

Adrenaline Amusements Inc. assumes no liability for injuries incurred while playing our games.

Operators should be aware that certain health and physical conditions may make people susceptible to injury when playing video games.

Safety



To avoid electrical shock, unplug the cabinet before performing installation or service procedures.

If a power cord is damaged, it must be replaced by the equivalent power cord available from your distributor.



Adrenaline Amusement Inc. assumes no liability for any damages or injuries incurred while setting up or servicing the cabinet. Only qualified service personnel should perform installation or service procedures.

Environmental Conditions

Cabinet is intended for indoor use only. Be sure to keep the cabinet dry and maintain operating temperatures of 59° - 86° (15° - 30°C).

Chapter 02 - Unit Features

Hardware Features

- Multitouch Screen
- 46" transparent Monitor
- Windows based computer
- Ticket dispenser

Cabinet Facts

Cabinet Dimensions

Length = 30"

Depth = 32"
Weight = 450 lbs

Height = 86"

Shipping Dimensions

Length = 30" Depth = 36" Height = 80"
Weight = 450 lbs.

Voltage

Voltage	Operating
110V AC	4 AMP
220V AC	2 AMP

Chapter 03 - Unit Installation

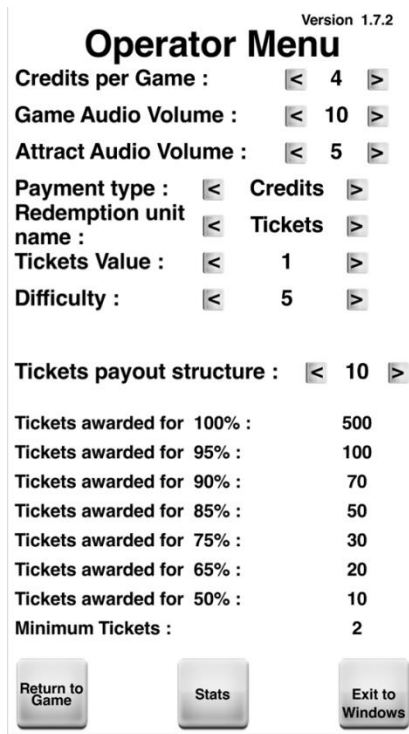
Assembling your Blackout Unit

1. Carefully remove the Cabinet from the shipping container, giving yourself enough space.
2. Move the cabinet to the desired location.
3. Lift the top Header to upright position. To do so you will need to press on the spring pins on each side of the hinge.
4. Plug in the power cord on the back of the cabinet.

Chapter 04 - Operator Menu, Game Setup

This chapter describes how to use and navigate the Operator Menu to set up your product and adjust all of the game's parameters. To access the operator Menu, use the Operator Button located inside the coin door. To navigate the menu, you can touch the arrows to change the option's value.

Figure 4.1



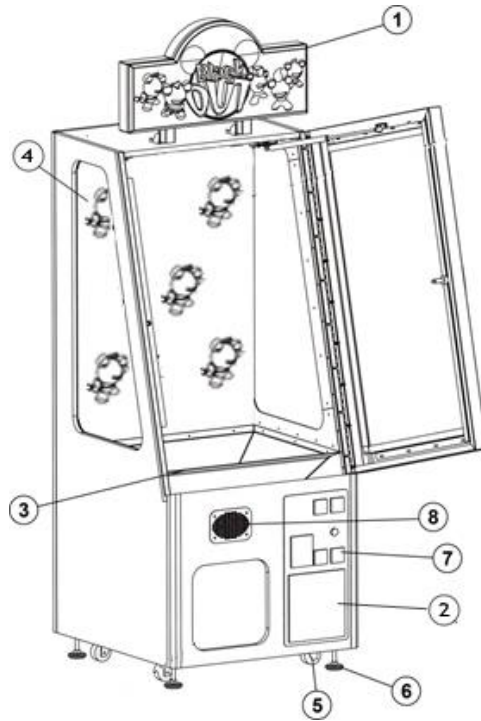
Operator Menu	What it does
Credits per Games	Number of credits needed to start a game
Game Audio Volume	Game sound volume
Attract Mode Volume	Attract Mode Volume
Payment type	Display 'Swipe card' instead of 'Insert credits' in the game
Redemption Unit name	Displays Tickets or Coupons
Ticket Value	Adjusts the value of physical tickets. Physical tickets are either worth "1" ticket or "2" tickets
Difficulty	Difficulty Level to reach 100% (1...: Easy,... 9...:Very hard)
Tickets payout structure	10 different payout settings with matching Attract Mode
Tickets awarded for %	# of tickets won when reaching % score
Return to game	Press to exit the operator menu and return to the game
Stats	Press to access the stats page (see figure 4.2)
Exit to Windows	Press to close the game and go to windows

Figure 4.2

Stats Menu		
	Since last reset	Lifetime
Total Games :	0	0
Total Credits :	0	0
Tickets wins :	0	0
Avg. % per game :	0%	0%
Result 95% - 100% :	0	0
Result 90% - 94% :	0	0
Result 85% - 89% :	0	0
Result 75% - 84% :	0	0
Result 65% - 74% :	0	0
Result 50% - 64% :	0	0
Result 0% - 49% :	0	0
Date last reset :	4/22/2013	
<div>Back</div> <div>Reset Stats</div>		

Operator Menu	What it does
Total Games	Number of game plays
Total Credits	Number of credits inserted in the unit
Tickets wins	Number of tickets won
Avg. % per game	Average score obtained by the player
Result xx% -xx %	Number of games ended in that % range
Date last reset	Date of the last manual reset of the stats
Back	Press to return to the operator menu
Reset stats	Press to reset the stats

Chapter 05 - Parts



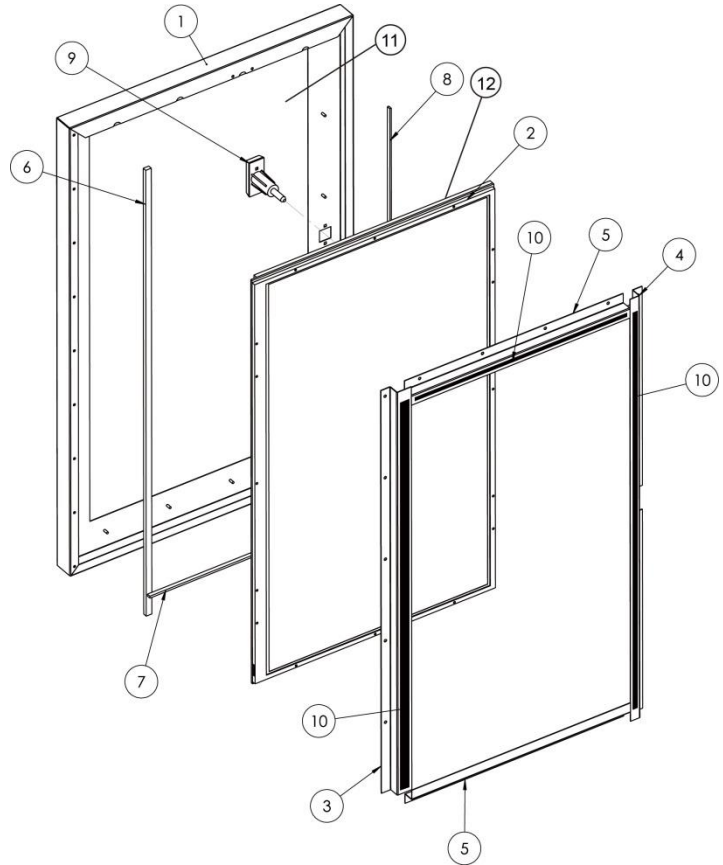
Ref	Part Description	Part Number
1	Header	INV-09-1004
2	Ticket Dispenser	ADR-421337-00
3	Prize Chute	INV-07-1010
4	Side Glass	INV-07-1020
5	Caster	INV-62805K-39
6	Leveling	INV-62805K-39
7	Coin Door	ADR-40-3000
8	Speaker&Grill	INV-04-0004

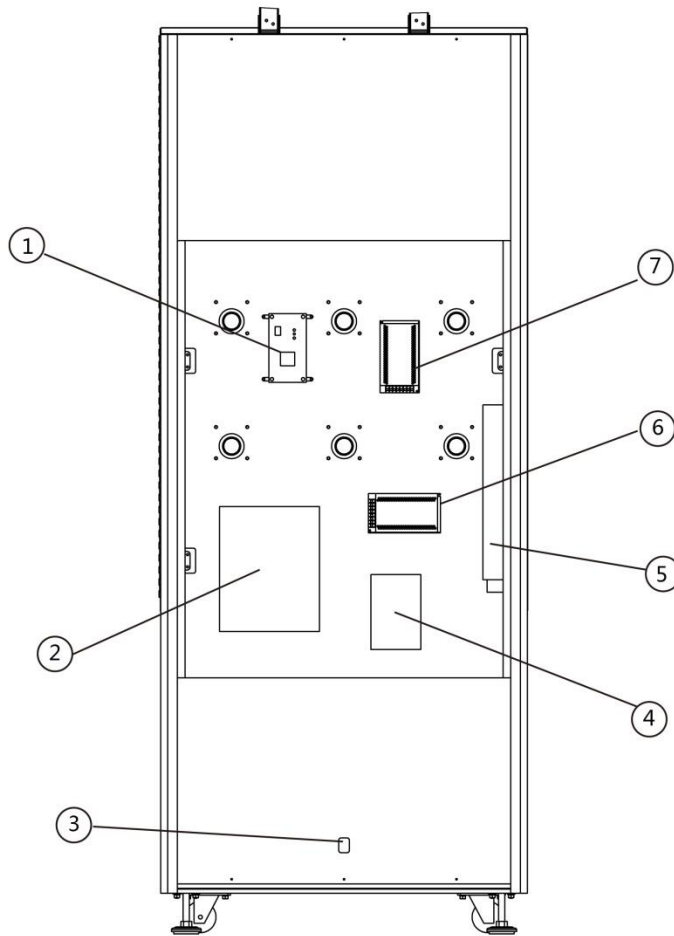


Ref	Part Description	Part Number
1	3 Side Decal Kit	INV-09-1001
2	How-to-Play Decal	INV-09-1011
3	Decal Window Right	INV-09-1006
4	Panel with 5 characters	INV-09-1010
5	Throw to Win Decal	INV-09-1002
6	Ticket Decal	INV-09-1012
7	Decal Window Left	INV-09-1007

Screen Assembly INV-01-0001

Ref	Part Description	Part Number
1	Steel Sheet Door. 16GA	INV-01-1020
2	Transparent LCD	INV-00-1300
3	TV Bracket Vertical	INV-01-1010
4	Side Screen Frame	INV-01-1011
5	Top Screen Frame	INV-01-1012
6	Plastic Spacer, Vertical	INV-07-1002
7	Plastic Horizontal Spacer,	INV-07-1001
8	Plastic Spacer, Vertical	INV-07-1003
9	T-Handle Lock	ADR-30-1838- 00
10	LED Strip (07 for Horizontal)	INV-14-1006
11	Tempered Glass	INV-07-1021
12	Touch Screen Sensor	INV-10-0002

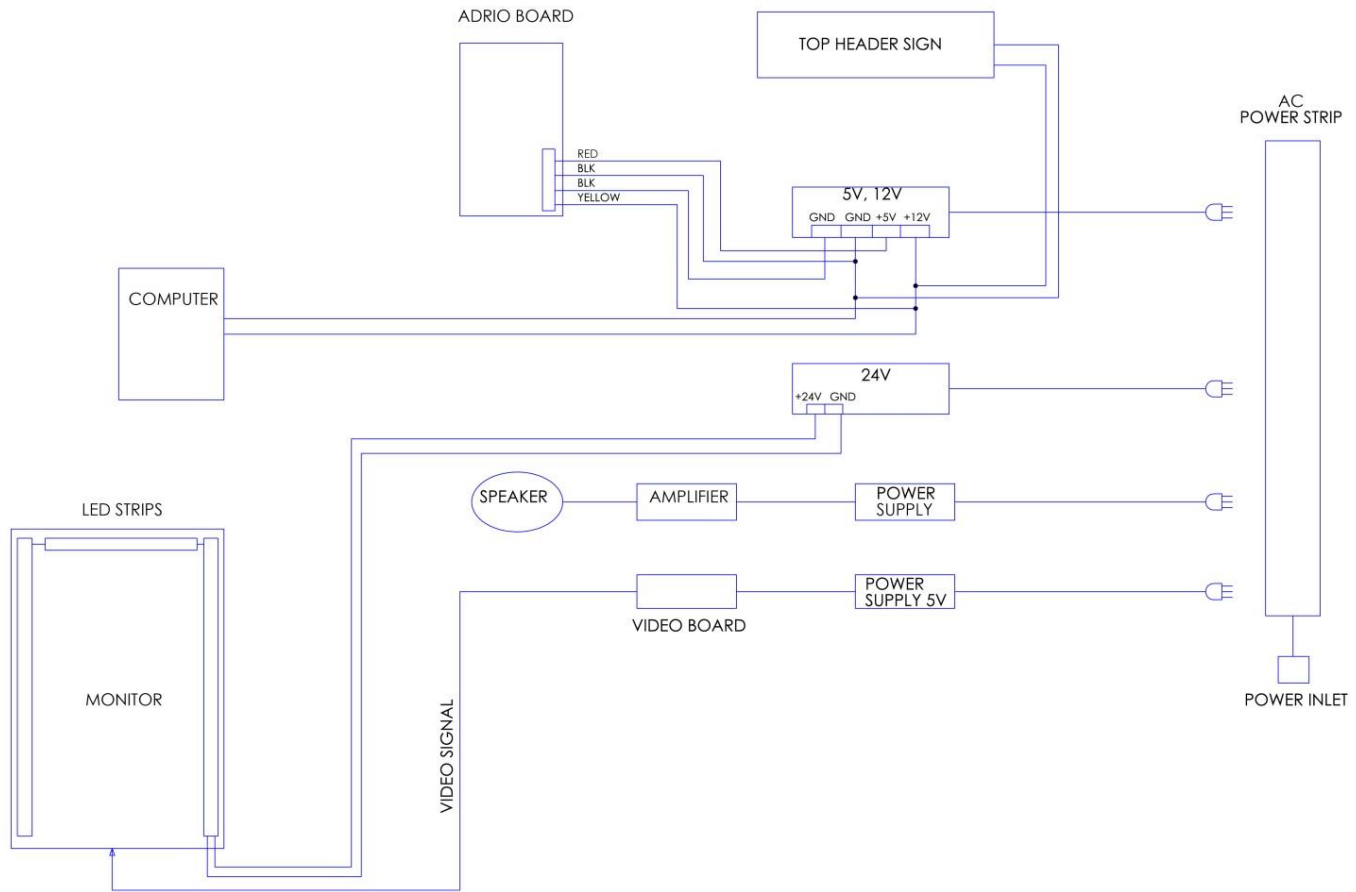




Ref	Part Description	Part Number
1	ADRIO FX + Board	INV-04-1200
2	Computer	INV-11-1001
3	Power Inlet	ADR-05-1241
4	Audio Amplifier	ADR-310-308
5	Power Strip	ADR-05-1240
6	24V Power Supply	ADR-80-1206-00
7	5V-12V Power Supply	ADR-80-0210-00
N	Video AD Board	INV-14-0010

Electronic Wiring

Power Distribution Diagram



Detailed Wiring Diagram

