



The Silent Scope Action Saga Continues...

# SILENT SCOPE EX

©2001 KONAMI ALL RIGHTS RESERVED.

## Silent Scope pushes you to new EXtremes!

Available in a **39" DELUXE UPRIGHT** cabinet  
or  
as a **CONVERSION KIT** for your Silent Scope  
or Dark Silhouette: Silent Scope 2.



Cabinet Dimensions:  
74.25"D x 38.5"W x 84"H  
Weight: 740lbs.

**LIFE-LIKE  
VIOLENCE  
STRONG**

Konami of America, Inc.  
Main Office: 1400 Bridge Parkway • Redwood City, CA 94065 • (650) 654-5600 • FAX (650) 631-6161  
Midwest Service Center: 900 Dearfield Parkway • Buffalo Grove, IL 60089 • (847) 793-0573 • FAX (847) 215-5122

FOR MORE INFORMATION, CONTACT PRIMETIME AMUSEMENTS: 1.800.550.0900/

with respect to this game. VISIT US AT: [HTTP://PRIMETIMEAMUSEMENTS.COM](http://PRIMETIMEAMUSEMENTS.COM)

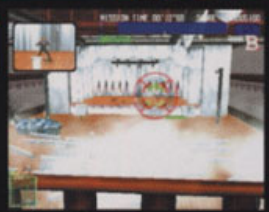


Rescue the Hostages - Be the Hero!

# SILENT SCOPE EX

©2001 KONAMI ALL RIGHTS RESERVED

LIFE-LIKE  
VIOLENCE  
STRONG



- New Viper Technology equals greater graphics and faster game play.
- Exciting new levels offer a variety of challenges.
- Pick off the enemies and complete each mission.
- Improve your rank with each successful mission.
- Available in a **39" DELUXE UPRIGHT cabinet** or as a **CONVERSION KIT** for your Silent Scope and Dark Silhouette: Silent Scope 2.

Cabinet Dimensions:  
74.25"D x 38.5"W x 84"H Weight: 740lbs.

Konami of America, Inc.  
Main Office: 1400 Bridge Parkway • Redwood City, CA 94065  
(650) 654-5600 • FAX (650) 631-6161  
Midwest Service Center:  
900 Deerfield Parkway • Buffalo Grove, IL 60089  
(847) 793-0573 • FAX (847) 215-5122

"KONAMI" and "Silent Scope EX" are trademarks of KONAMI CORPORATION. ©2001 KONAMI ALL RIGHTS RESERVED.

**KONAMI**

[www.konami.com/arcade/](http://www.konami.com/arcade/)

